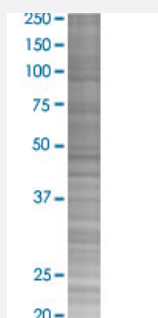


# NETO2 293T Cell Transient Overexpression Lysate(Denatured)

Catalog # H00081831-T02

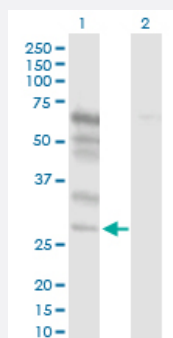
Size 100 uL

## Applications



### SDS-PAGE Gel

NETO2 transfected lysate.



### Western Blot

Lane 1: NETO2 transfected lysate ( 17.00 KDa)

Lane 2: Non-transfected lysate.

## Specification

**Transfected Cell Line** 293T

**Plasmid** pCMV-NETO2 full-length

**Host** Human

**Theoretical MW (kDa)** 17

### Quality Control Testing

Transient overexpression cell lysate was tested with Anti-NETO2 antibody ([H00081831-D01P](#)) by Western Blots.

SDS-PAGE Gel

NETO2 transfected lysate.

Western Blot

Lane 1: NETO2 transfected lysate ( 17.00 KDa)

Lane 2: Non-transfected lysate.

**Storage Buffer**

1X Sample Buffer (50 mM Tris-HCl, 2% SDS, 10% glycerol, 300 mM 2-mercaptoethanol, 0.01% Bromophenol blue)

**Storage Instruction**

Store at -80°C. Aliquot to avoid repeated freezing and thawing.

## Applications

- Western Blot

## Gene Info — NETO2

**Entrez GeneID**[81831](#)**GeneBank Accession#**[BC012381.1](#)**Protein Accession#**[AAH12381.1](#)**Gene Name**

NETO2

**Gene Alias**

FLJ10430, FLJ14724, FLJ90456, NEOT2

**Gene Description**

neuropilin (NRP) and tolloid (TLL)-like 2

**Omim ID**[607974](#)**Gene Ontology**[Hyperlink](#)**Gene Summary**

This gene encodes a predicted transmembrane protein containing two extracellular CUB domains followed by a low-density lipoprotein class A (LDLa) domain. It also has an intracellular FXNPXY-like motif, which has been shown in other proteins to be essential for the internalization of clathrin-coated pits during endocytosis. Alternatively spliced transcript variants have been observed, but they have not been fully characterized. [provided by RefSeq]

**Other Designations**

neuropilin- and tolloid-like protein 2