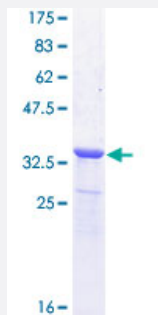


NETO2 (Human) Recombinant Protein (Q01)

Catalog # H00081831-Q01

Size 25 ug, 10 ug

Applications



Specification

Product Description	Human NETO2 partial ORF (NP_060562.3, 426 a.a. - 525 a.a.) recombinant protein with GST-tag at N-terminal.
Sequence	RRSSTASRCIHDHHCQSQASSVKQSRTNLSSMELPFRNDFAPQPMKTFNSTFKKSSYTFKQGH ECPEQALEDRVMEEIPCEIVRGREDSAQASISIDF
Host	Wheat Germ (in vitro)
Theoretical MW (kDa)	36.74
Preparation Method	in vitro wheat germ expression system
Purification	Glutathione Sepharose 4 Fast Flow
Quality Control Testing	12.5% SDS-PAGE Stained with Coomassie Blue.
Storage Buffer	50 mM Tris-HCl, 10 mM reduced Glutathione, pH=8.0 in the elution buffer.
Storage Instruction	Store at -80°C. Aliquot to avoid repeated freezing and thawing.
Note	Best use within three months from the date of receipt of this protein.

Applications

- Enzyme-linked Immunoabsorbent Assay
- Western Blot (Recombinant protein)
- Antibody Production
- Protein Array

Gene Info — NETO2

Entrez GeneID [81831](#)

GeneBank Accession# [NM_018092](#)

Protein Accession# [NP_060562.3](#)

Gene Name NETO2

Gene Alias FLJ10430, FLJ14724, FLJ90456, NEOT2

Gene Description neuropilin (NRP) and tolloid (TLL)-like 2

Omim ID [607974](#)

Gene Ontology [Hyperlink](#)

Gene Summary This gene encodes a predicted transmembrane protein containing two extracellular CUB domains followed by a low-density lipoprotein class A (LDLa) domain. It also has an intracellular FXNPX Y-like motif, which has been shown in other proteins to be essential for the internalization of clathrin coated pits during endocytosis. Alternatively spliced transcript variants have been observed, but they have not been fully characterized. [provided by RefSeq]

Other Designations neuropilin- and tolloid-like protein 2