

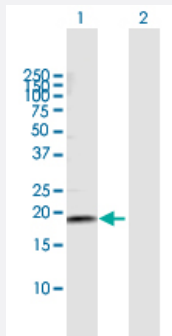
MaxPab®

NETO2 purified MaxPab mouse polyclonal antibody (B01P)

Catalog # H00081831-B01P

Size 50 ug

Applications

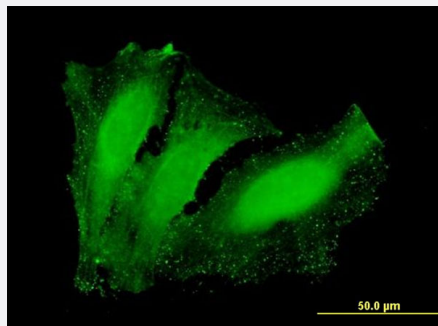


Western Blot (Transfected lysate)

Western Blot analysis of NETO2 expression in transfected 293T cell line ([H00081831-T01](#)) by NETO2 MaxPab polyclonal antibody.

Lane 1: NETO2 transfected lysate(17.00 KDa).

Lane 2: Non-transfected lysate.



Immunofluorescence

Immunofluorescence of purified MaxPab antibody to NETO2 on HeLa cell. [antibody concentration 10 ug/ml]

Specification

Product Description	Mouse polyclonal antibody raised against a full-length human NETO2 protein.
Immunogen	NETO2 (AAH12381.1, 1 a.a. ~ 148 a.a) full-length human protein.
Sequence	MACKTAFNKTGFQEVFDPPHYELFSLRDKEISADLADLSEELDNYQKMRRSSTASRCIHDHHCGRS QASSVKQSRTNLSSMELPFRNDFAQPQPMKTFNSTFKSSYTFKQGHECPEQALEDRVMEEIPC EIVRGREDSAQASISIDF
Host	Mouse
Reactivity	Human

Quality Control Testing	Antibody reactive against mammalian transfected lysate.
Storage Buffer	In 1x PBS, pH 7.4
Storage Instruction	Store at -20°C or lower. Aliquot to avoid repeated freezing and thawing.

Applications

- Western Blot (Transfected lysate)

Western Blot analysis of NETO2 expression in transfected 293T cell line ([H00081831-T01](#)) by NETO2 MaxPab polyclonal antibody.

Lane 1: NETO2 transfected lysate(17.00 KDa).

Lane 2: Non-transfected lysate.

[Protocol Download](#)

- Immunofluorescence

Immunofluorescence of purified MaxPab antibody to NETO2 on HeLa cell. [antibody concentration 10 ug/ml]

Gene Info — NETO2

Entrez GeneID [81831](#)

GeneBank Accession# [BC012381.1](#)

Protein Accession# [AAH12381.1](#)

Gene Name NETO2

Gene Alias FLJ10430, FLJ14724, FLJ90456, NEOT2

Gene Description neuropilin (NRP) and tolloid (TLL)-like 2

Omim ID [607974](#)

Gene Ontology [Hyperlink](#)

Gene Summary This gene encodes a predicted transmembrane protein containing two extracellular CUB domain s followed by a low-density lipoprotein class A (LDLa) domain. It also has an intracellular FXNPX Y-like motif, which has been shown in other proteins to be essential for the internalization of clathrin coated pits during endocytosis. Alternatively spliced transcript variants have been observed, but they have not been fully characterized. [provided by RefSeq]

Other Designations neuropilin- and tolloid-like protein 2