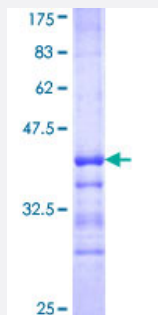


# MAP1LC3B (Human) Recombinant Protein (Q01)

Catalog # H00081631-Q01

Size 25 ug, 10 ug

## Applications



## Specification

Product Description	Human MAP1LC3B partial ORF ( NP_073729, 1 a.a. - 71 a.a.) recombinant protein with GST-tag at N-terminal.
Sequence	MPSEKTFKQRRTFEQRVEDVRLIREQHPTKIPVIIERYKGEKQLPVLDKTKFLVPDHSVNMSELIKIIRRL
Host	Wheat Germ (in vitro)
Theoretical MW (kDa)	33.55
Interspecies Antigen Sequence	Rat (96)
Preparation Method	<a href="#">in vitro wheat germ expression system</a>
Purification	Glutathione Sepharose 4 Fast Flow
Quality Control Testing	12.5% SDS-PAGE Stained with Coomassie Blue.
Storage Buffer	50 mM Tris-HCl, 10 mM reduced Glutathione, pH=8.0 in the elution buffer.
Storage Instruction	Store at -80°C. Aliquot to avoid repeated freezing and thawing.
Note	Best use within three months from the date of receipt of this protein.

## Applications

- Enzyme-linked Immunoabsorbent Assay
- Western Blot (Recombinant protein)
- Antibody Production
- Protein Array

## Gene Info — MAP1LC3B

**Entrez GeneID** [81631](#)

**GeneBank Accession#** [NM\\_022818](#)

**Protein Accession#** [NP\\_073729](#)

**Gene Name** MAP1LC3B

**Gene Alias** LC3B, MAP1A/1BLC3

**Gene Description** microtubule-associated protein 1 light chain 3 beta

**Gene Ontology** [Hyperlink](#)

**Gene Summary** The product of this gene is a subunit of neuronal microtubule-associated MAP1A and MAP1B proteins, which are involved in microtubule assembly and important for neurogenesis. Studies on the rat homolog implicate a role for this gene in autophagy, a process that involves the bulk degradation of cytoplasmic component. [provided by RefSeq]

**Other Designations** microtubule-associated proteins 1A/1B light chain 3