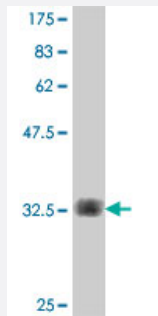


# MAP1LC3B polyclonal antibody (A01)

Catalog # H00081631-A01

Size 50 uL

## Applications



Western Blot detection against Immunogen (33.92 KDa) .

## Specification

<b>Product Description</b>	Mouse polyclonal antibody raised against a partial recombinant MAP1LC3B.
<b>Immunogen</b>	MAP1LC3B (NP_073729, 1 a.a. ~ 71 a.a) partial recombinant protein with GST tag.
<b>Sequence</b>	MPSEKTFKQRRTFEQRVEDVRLIREQHPTKIPVIIERYKGKQLPVLDKTKFLVPDHSVNMSELIKIIIRRL
<b>Host</b>	Mouse
<b>Reactivity</b>	Human
<b>Interspecies Antigen Sequence</b>	Rat (96)
<b>Quality Control Testing</b>	Antibody Reactive Against Recombinant Protein. Western Blot detection against Immunogen (33.92 KDa) .
<b>Storage Buffer</b>	50 % glycerol
<b>Storage Instruction</b>	Store at -20°C or lower. Aliquot to avoid repeated freezing and thawing.

## Applications

- Western Blot (Recombinant protein)

[Protocol Download](#)

- ELISA

## Gene Info — MAP1LC3B

**Entrez GeneID** [81631](#)

**GeneBank Accession#** [NM\\_022818](#)

**Protein Accession#** [NP\\_073729](#)

**Gene Name** MAP1LC3B

**Gene Alias** LC3B, MAP1A/1BLC3

**Gene Description** microtubule-associated protein 1 light chain 3 beta

**Gene Ontology** [Hyperlink](#)

**Gene Summary** The product of this gene is a subunit of neuronal microtubule-associated MAP1A and MAP1B proteins, which are involved in microtubule assembly and important for neurogenesis. Studies on the rat homolog implicate a role for this gene in autophagy, a process that involves the bulk degradation of cytoplasmic component. [provided by RefSeq]

**Other Designations** microtubule-associated proteins 1A/1B light chain 3