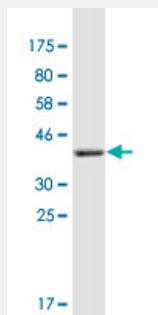


COL21A1 monoclonal antibody (M01), clone 1G6

Catalog # H00081578-M01

Size 100 ug

Applications



Western Blot detection against Immunogen (36.74 KDa) .

Specification

Product Description	Mouse monoclonal antibody raised against a partial recombinant COL21A1.
Immunogen	COL21A1 (NP_110447, 221 a.a. ~ 320 a.a) partial recombinant protein with GST tag. MW of the GST tag alone is 26 KDa.
Sequence	IPVAARDERGF DILLGLDVNKKVKKRIQLSPKKIKGYEVTSKVDLSELTSNVFPEGLPPSYV FVSTQ RFKVKKI WDLWRILTIDGRPQIAVTLNGVDKIL
Host	Mouse
Reactivity	Human
Isotype	IgG2a Kappa
Quality Control Testing	Antibody Reactive Against Recombinant Protein. Western Blot detection against Immunogen (36.74 KDa) .
Storage Buffer	In 1x PBS, pH 7.4
Storage Instruction	Store at -20°C or lower. Aliquot to avoid repeated freezing and thawing.

Applications

- Western Blot (Recombinant protein)

[Protocol Download](#)

- ELISA

Gene Info — COL21A1

Entrez GeneID [81578](#)

GeneBank Accession# [NM_030820](#)

Protein Accession# [NP_110447](#)

Gene Name COL21A1

Gene Alias COLA1L, DKFZp564B052, FLJ39125, FLJ44623, FP633, MGC26619, dJ682J15.1, dJ708F5.1

Gene Description collagen, type XXI, alpha 1

Omim ID [610002](#)

Gene Ontology [Hyperlink](#)

Gene Summary This gene encodes the alpha chain of type XXI collagen, a member of the FACIT collagen family (fibril-associated collagens with interrupted helices). Type XXI collagen is localized to tissues containing type I collagen so, like other members of this collagen family, it may serve to maintain the integrity of the extracellular matrix. An alternatively spliced transcript variant has been described, but its full-length nature has yet to be determined. [provided by RefSeq]

Other Designations OTTHUMP00000040019|alpha 1 chain-like collagen

Disease

- [Tobacco Use Disorder](#)