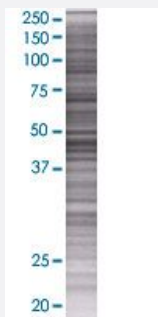


WBSCR16 293T Cell Transient Overexpression Lysate(Denatured)

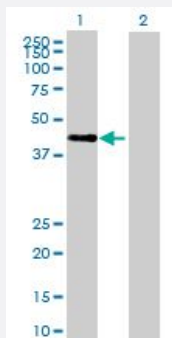
Catalog # H00081554-T01 Size 100 uL

Applications



SDS-PAGE Gel

WBSCR16 transfected lysate.



Western Blot

Lane 1: WBSCR16 transfected lysate (49.9 KDa)

Lane 2: Non-transfected lysate.

Specification

Transfected Cell Line	293T
Plasmid	pCMV-WBSCR16 full-length
Host	Human
Theoretical MW (kDa)	49.9
Interspecies Antigen Sequence	Mouse (91); Rat (90)

Quality Control Testing

Transient overexpression cell lysate was tested with Anti-WBSCR16 antibody ([H00081554-B01](#)) by Western Blots.
SDS-PAGE Gel
WBSCR16 transfected lysate.
Western Blot
Lane 1: WBSCR16 transfected lysate (49.9 KDa)
Lane 2: Non-transfected lysate.

Storage Buffer

1X Sample Buffer (50 mM Tris-HCl, 2% SDS, 10% glycerol, 300 mM 2-mercaptoethanol, 0.01% Bromophenol blue)

Storage Instruction

Store at -80°C. Aliquot to avoid repeated freezing and thawing.

Applications

- Western Blot

Gene Info — WBSCR16

Entrez GeneID[81554](#)**GeneBank Accession#**[BC007823](#)**Protein Accession#**[AAH07823](#)**Gene Name**

WBSCR16

Gene Alias

DKFZp434D0421, MGC189739, MGC44931

Gene Description

Williams-Beuren syndrome chromosome region 16

Gene Ontology[Hyperlink](#)**Gene Summary**

This gene encodes an RCC1-like G-exchanging factor. It is deleted in Williams syndrome, a multi system developmental disorder caused by the deletion of contiguous genes at 7q11.23. [provided by RefSeq]

Other Designations

RCC1-like G exchanging factor-like