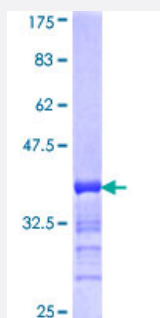


RSHL1 (Human) Recombinant Protein (Q01)

Catalog # H00081492-Q01

Size 10 ug, 25 ug

Applications



Specification

Product Description	Human RSHL1 partial ORF (NP_110412, 21 a.a. - 113 a.a.) recombinant protein with GST-tag at N-terminal.
Sequence	SQASQRRHSRDQAQALAADPEERQQIPPDAGRNPAGWSQRGSLSQQENLLMPQVFQAEEARLGGMEYPSVNTGFPSEFQPPYSDESRMQVAE
Host	Wheat Germ (in vitro)
Theoretical MW (kDa)	35.97
Interspecies Antigen Sequence	Mouse (74); Rat (75)
Preparation Method	in vitro wheat germ expression system
Purification	Glutathione Sepharose 4 Fast Flow
Quality Control Testing	12.5% SDS-PAGE Stained with Coomassie Blue.
Storage Buffer	50 mM Tris-HCl, 10 mM reduced Glutathione, pH=8.0 in the elution buffer.
Storage Instruction	Store at -80°C. Aliquot to avoid repeated freezing and thawing.
Note	Best use within three months from the date of receipt of this protein.

Applications

- Enzyme-linked Immunoabsorbent Assay
- Western Blot (Recombinant protein)
- Antibody Production
- Protein Array

Gene Info — RSHL1

Entrez GeneID [81492](#)

GeneBank Accession# [NM_030785](#)

Protein Accession# [NP_110412](#)

Gene Name RSHL1

Gene Alias RSP4, RSP6

Gene Description radial spokehead-like 1

Omim ID [607548](#)

Gene Ontology [Hyperlink](#)

Gene Summary The protein encoded by this gene is similar to a sea urchin radial spoke head protein. Radial spoke protein complexes form part of the axoneme of eukaryotic flagella and are located between the axoneme's outer ring of doublet microtubules and central pair of microtubules. In Chlamydomonas, radial spoke proteins are thought to regulate the activity of dynein and the symmetry of flagellar beating patterns. This gene maps to a region of chromosome 19 that is linked to primary ciliary dyskinesia-2 (CILD2). [provided by RefSeq]

Other Designations ortholog of mouse radial spokehead-like 1