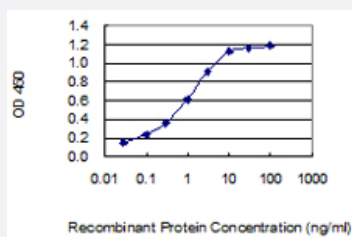


RSHL1 monoclonal antibody (M02), clone 3D12

Catalog # H00081492-M02

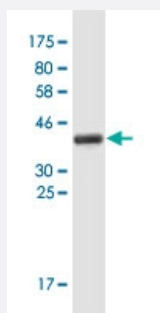
Size 100 ug

Applications



Sandwich ELISA (Recombinant protein)

Detection limit for recombinant GST tagged RSHL1 is 0.03 ng/ml as a capture antibody.



Western Blot detection against Immunogen (35.97 KDa) .

Specification

Product Description

Mouse monoclonal antibody raised against a partial recombinant RSHL1.

Immunogen

RSHL1 (NP_110412, 21 a.a. ~ 113 a.a) partial recombinant protein with GST tag. MW of the GST tag alone is 26 KDa.

Sequence

SQASQRRHSRDQAQALAADPEERQQIPPDAGRNPAGWSQRGSLSQQENLLMPQVFQAEEARL
GGMEYPSVNTGFPSEFQPYPYSDSRMQVAE

Host

Mouse

Reactivity

Human

Interspecies Antigen Sequence	Mouse (74); Rat (75)
Isotype	IgG2a Kappa
Quality Control Testing	Antibody Reactive Against Recombinant Protein. Western Blot detection against Immunogen (35.97 KDa) .
Storage Buffer	In 1x PBS, pH 7.4
Storage Instruction	Store at -20°C or lower. Aliquot to avoid repeated freezing and thawing.

Applications

- Western Blot (Recombinant protein)

[Protocol Download](#)

- Sandwich ELISA (Recombinant protein)

Detection limit for recombinant GST tagged RSHL1 is 0.03 ng/ml as a capture antibody.

[Protocol Download](#)

- ELISA

Gene Info — RSHL1

Entrez GeneID	81492
GeneBank Accession#	NM_030785
Protein Accession#	NP_110412
Gene Name	RSHL1
Gene Alias	RSP4, RSP6
Gene Description	radial spokehead-like 1
Omim ID	607548
Gene Ontology	Hyperlink

Gene Summary

The protein encoded by this gene is similar to a sea urchin radial spoke head protein. Radial spoke protein complexes form part of the axoneme of eukaryotic flagella and are located between the axoneme's outer ring of doublet microtubules and central pair of microtubules. In *Chlamydomonas*, radial spoke proteins are thought to regulate the activity of dynein and the symmetry of flagellar beating patterns. This gene maps to a region of chromosome 19 that is linked to primary ciliary dyskinesia-2 (CILD2). [provided by RefSeq]

Other Designations

ortholog of mouse radial spokehead-like 1