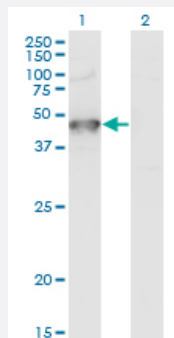


GRINL1A monoclonal antibody (M04), clone 2E4

Catalog # H00081488-M04

Size 100 ug

Applications

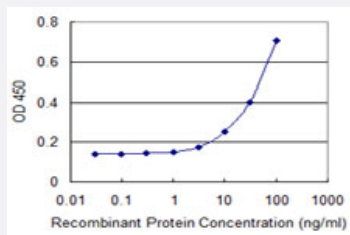


Western Blot (Transfected lysate)

Western Blot analysis of GRINL1A expression in transfected 293T cell line by GRINL1A monoclonal antibody (M04), clone 2E4.

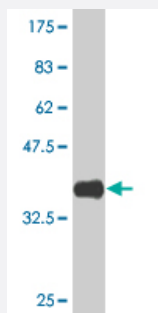
Lane 1: GRINL1A transfected lysate (Predicted MW: 41.7 KDa).

Lane 2: Non-transfected lysate.



Sandwich ELISA (Recombinant protein)

Detection limit for recombinant GST tagged GRINL1A is 1 ng/ml as a capture antibody.



Western Blot detection against Immunogen (36.74 KDa) .

Specification

Product Description

Mouse monoclonal antibody raised against a partial recombinant GRINL1A.

Immunogen	GRINL1A (NP_056347.1, 269 a.a. ~ 368 a.a) partial recombinant protein with GST tag. MW of the GST tag alone is 26 KDa.
Sequence	GSPISSEERRRRDKQHLDITAARLLPLHHMPTQLLSIEESLALQKQQKQNYEEMQAKLAAQKLAE RLNIKMRSYNPEGESSGRYREVRDEDDDWSSDEF
Host	Mouse
Reactivity	Human
Interspecies Antigen Sequence	Mouse (71); Rat (71)
Isotype	IgG2a Kappa
Quality Control Testing	Antibody Reactive Against Recombinant Protein. Western Blot detection against Immunogen (36.74 KDa) .
Storage Buffer	In 1x PBS, pH 7.4
Storage Instruction	Store at -20°C or lower. Aliquot to avoid repeated freezing and thawing.

Applications

- Western Blot (Transfected lysate)

Western Blot analysis of GRINL1A expression in transfected 293T cell line by GRINL1A monoclonal antibody (M04), clone 2E4.

Lane 1: GRINL1A transfected lysate (Predicted MW: 41.7 KDa).

Lane 2: Non-transfected lysate.

[Protocol Download](#)

- Western Blot (Recombinant protein)

[Protocol Download](#)

- Sandwich ELISA (Recombinant protein)

Detection limit for recombinant GST tagged GRINL1A is 1 ng/ml as a capture antibody.

[Protocol Download](#)

- ELISA

Gene Info — GRINL1A

Entrez GeneID	81488
GeneBank Accession#	NM_015532
Protein Accession#	NP_056347.1
Gene Name	GRINL1A
Gene Alias	DKFZp586F1918
Gene Description	glutamate receptor, ionotropic, N-methyl D-aspartate-like 1A
Omim ID	606485
Gene Ontology	Hyperlink
Gene Summary	<p>This gene (GRINL1A) is part of a complex transcript unit that includes the gene for GRINL1A combined protein (Gcom1). Transcription of this gene occurs at a downstream promoter, with at least three different alternatively spliced variants, grouped together as Gdown for GRINL1A downstream transcripts. The Gcom1 gene uses an upstream promoter for transcription and also has multiple alternatively spliced variants. [provided by RefSeq]</p>
Other Designations	GRINL1A downstream protein Gdown4 OTTHUMP00000163421