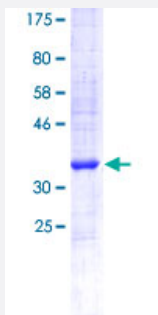


OR2C3 (Human) Recombinant Protein (Q01)

Catalog # H00081472-Q01

Size 25 ug, 10 ug

Applications



Specification

Product Description	Human OR2C3 partial ORF (NP_932340.2, 220 a.a. - 319 a.a.) recombinant protein with GST tag at N-terminal.
Sequence	HIARAVLKIRSAEGRRKAFNTCSSHVAVVSLFYGSIIFMYLQPAKSTSHEQGKFIALFYTVVTPALNP LYTLRNTEVKLSALRHMVLENC CGSAGKLAQI
Host	Wheat Germ (in vitro)
Theoretical MW (kDa)	36.63
Preparation Method	in vitro wheat germ expression system
Purification	Glutathione Sepharose 4 Fast Flow
Quality Control Testing	12.5% SDS-PAGE Stained with Coomassie Blue
Storage Buffer	50 mM Tris-HCl, 10 mM reduced Glutathione, pH=8.0 in the elution buffer.
Storage Instruction	Store at -80°C. Aliquot to avoid repeated freezing and thawing.
Note	Best use within three months from the date of receipt of this protein.

Applications

- Enzyme-linked Immunoabsorbent Assay
- Western Blot (Recombinant protein)
- Antibody Production
- Protein Array

Gene Info — OR2C3

Entrez GeneID [81472](#)

GeneBank Accession# [NM_198074.3](#)

Protein Accession# [NP_932340.2](#)

Gene Name OR2C3

Gene Alias OR2C4, OR2C5P, OST742

Gene Description olfactory receptor, family 2, subfamily C, member 3

Gene Ontology [Hyperlink](#)

Gene Summary Olfactory receptors interact with odorant molecules in the nose, to initiate a neuronal response that triggers the perception of a smell. The olfactory receptor proteins are members of a large family of G-protein-coupled receptors (GPCR) arising from single coding-exon genes. Olfactory receptors share a 7-transmembrane domain structure with many neurotransmitter and hormone receptors and are responsible for the recognition and G protein-mediated transduction of odorant signals. The olfactory receptor gene family is the largest in the genome. The nomenclature assigned to the olfactory receptor genes and proteins for this organism is independent of other organisms. [provided by RefSeq]

Other Designations OTTHUMP00000038363|olfactory receptor OR1-30|olfactory receptor, family 2, subfamily C, member 4|olfactory receptor, family 2, subfamily C, member 5 pseudogene

Pathway

- [Olfactory transduction](#)