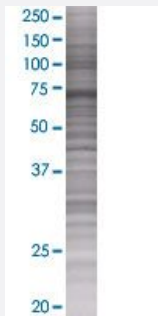


# COLEC12 293T Cell Transient Overexpression Lysate(Denatured)

Catalog # H00081035-T01

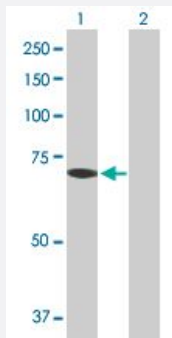
Size 100 uL

## Applications



### SDS-PAGE Gel

COLEC12 transfected lysate.



### Western Blot

Lane 1: COLEC12 transfected lysate ( 11.11 KDa)

Lane 2: Non-transfected lysate.

## Specification

**Transfected Cell Line** 293T

**Plasmid** pCMV-COLEC12 full-length

**Host** Human

**Theoretical MW (kDa)** 11.11

**Quality Control Testing** Transient overexpression cell lysate was tested with Anti-COLEC12 antibody ([H00081035-B01](#)) by Western Blots.  
SDS-PAGE Gel  
COLEC12 transfected lysate.  
Western Blot  
Lane 1: COLEC12 transfected lysate ( 11.11 KDa)  
Lane 2: Non-transfected lysate.

**Storage Buffer**

1X Sample Buffer (50 mM Tris-HCl, 2% SDS, 10% glycerol, 300 mM 2-mercaptoethanol, 0.01% Bromophenol blue)

**Storage Instruction**

Store at -80°C. Aliquot to avoid repeated freezing and thawing.

## Applications

- Western Blot

## Gene Info — COLEC12

**Entrez GeneID**

[81035](#)

**GeneBank Accession#**

[NM\\_030781](#)

**Protein Accession#**

[NP\\_110408](#)

**Gene Name**

COLEC12

**Gene Alias**

CLP1, NSR2, SCARA4, SRCL

**Gene Description**

collectin sub-family member 12

**Omim ID**

[607621](#)

**Gene Ontology**

[Hyperlink](#)

**Gene Summary**

This gene encodes a member of the C-lectin family, proteins that possess collagen-like sequences and carbohydrate recognition domains. This protein is a scavenger receptor, a cell surface glycoprotein that can bind to carbohydrate antigens on microorganisms facilitating their recognition and removal. In addition, these receptors can recognize oxidized phospholipids so they may also participate in removing oxidatively damaged or apoptotic cells. [provided by RefSeq]

**Other Designations**

collectin placenta 1|nurse cell scavenger receptor 2|scavenger receptor class A, member 4|scavenger receptor with C-type lectin

## Disease

- [Tobacco Use Disorder](#)