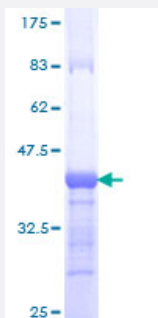


# COLEC12 (Human) Recombinant Protein (Q01)

Catalog # H00081035-Q01

Size 25 ug, 10 ug

## Applications



## Specification

<b>Product Description</b>	Human COLEC12 partial ORF ( AAH60789, 101 a.a. - 200 a.a.) recombinant protein with GST-tag at N-terminal.
<b>Sequence</b>	AISTNSELSTFRSDILDLRQQQLREITEKTSKNKDTLEKLQASGDALVDRQSQLKETLENNNSFLITTVN KTLQAYNGYVTNLQQDTSVLQGNLQNQMYSHN
<b>Host</b>	Wheat Germ (in vitro)
<b>Theoretical MW (kDa)</b>	36.74
<b>Preparation Method</b>	<a href="#">in vitro wheat germ expression system</a>
<b>Purification</b>	Glutathione Sepharose 4 Fast Flow
<b>Quality Control Testing</b>	12.5% SDS-PAGE Stained with Coomassie Blue.
<b>Storage Buffer</b>	50 mM Tris-HCl, 10 mM reduced Glutathione, pH=8.0 in the elution buffer.
<b>Storage Instruction</b>	Store at -80°C. Aliquot to avoid repeated freezing and thawing.
<b>Note</b>	Best use within three months from the date of receipt of this protein.

## Applications

- Enzyme-linked Immunoabsorbent Assay
- Western Blot (Recombinant protein)
- Antibody Production
- Protein Array

## Gene Info — COLEC12

Entrez GeneID	<a href="#">81035</a>
GeneBank Accession#	<a href="#">BC060789</a>
Protein Accession#	<a href="#">AAH60789</a>
Gene Name	COLEC12
Gene Alias	CLP1, NSR2, SCARA4, SRCL
Gene Description	collectin sub-family member 12
Omim ID	<a href="#">607621</a>
Gene Ontology	<a href="#">Hyperlink</a>
Gene Summary	This gene encodes a member of the C-lectin family, proteins that possess collagen-like sequence s and carbohydrate recognition domains. This protein is a scavenger receptor, a cell surface glycoprotein that can bind to carbohydrate antigens on microorganisms facilitating their recognition and removal. In addition, these receptors can recognize oxidized phospholipids so they may also participate in removing oxidatively damaged or apoptotic cells. [provided by RefSeq]
Other Designations	collectin placenta 1 nurse cell scavenger receptor 2 scavenger receptor class A, member 4 scavenger receptor with C-type lectin

## Disease

- [Tobacco Use Disorder](#)