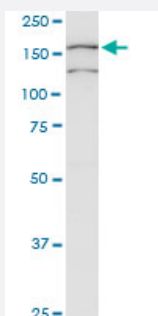


COLEC12 monoclonal antibody (M01), clone 4A7

Catalog # H00081035-M01

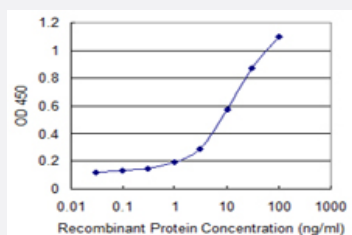
Size 100 ug

Applications



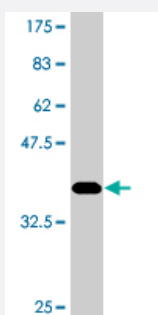
Western Blot (Cell lysate)

COLEC12 monoclonal antibody (M01), clone 4A7. Western Blot analysis of COLEC12 expression in JAR.



Sandwich ELISA (Recombinant protein)

Detection limit for recombinant GST tagged COLEC12 is 0.3 ng/ml as a capture antibody.



Western Blot detection against Immunogen (36.74 KDa) .

Specification

Product Description

Mouse monoclonal antibody raised against a partial recombinant COLEC12.

Immunogen	COLEC12 (AAH60789, 101 a.a. ~ 200 a.a) partial recombinant protein with GST tag. MW of the GST tag alone is 26 KDa.
Sequence	AISTNSELSTFRSDILDLRQQLEITEKTSKNKDTLEKLQASGDALVDRQSQLKETLENNNSFLITTVN KTLQAYNGYVTNLQQDTSVLQGNNLQNMYSHN
Host	Mouse
Reactivity	Human
Isotype	IgG2a Kappa
Quality Control Testing	Antibody Reactive Against Recombinant Protein. Western Blot detection against Immunogen (36.74 KDa) .
Storage Buffer	In 1x PBS, pH 7.4
Storage Instruction	Store at -20°C or lower. Aliquot to avoid repeated freezing and thawing.

Applications

- Western Blot (Cell lysate)

COLEC12 monoclonal antibody (M01), clone 4A7. Western Blot analysis of COLEC12 expression in JAR.

[Protocol Download](#)

- Western Blot (Recombinant protein)

[Protocol Download](#)

- Sandwich ELISA (Recombinant protein)

Detection limit for recombinant GST tagged COLEC12 is 0.3 ng/ml as a capture antibody.

[Protocol Download](#)

- ELISA

Gene Info — COLEC12

Entrez GeneID	81035
GeneBank Accession#	BC060789
Protein Accession#	AAH60789

Gene Name	COLEC12
Gene Alias	CLP1, NSR2, SCARA4, SRCL
Gene Description	collectin sub-family member 12
Omim ID	607621
Gene Ontology	Hyperlink
Gene Summary	<p>This gene encodes a member of the C-lectin family, proteins that possess collagen-like sequences and carbohydrate recognition domains. This protein is a scavenger receptor, a cell surface glycoprotein that can bind to carbohydrate antigens on microorganisms facilitating their recognition and removal. In addition, these receptors can recognize oxidized phospholipids so they may also participate in removing oxidatively damaged or apoptotic cells. [provided by RefSeq]</p>
Other Designations	collectin placenta 1 nurse cell scavenger receptor 2 scavenger receptor class A, member 4 scavenger receptor with C-type lectin

Disease

- [Tobacco Use Disorder](#)