

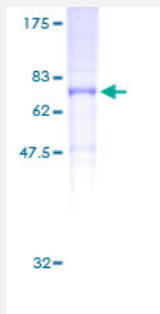
Full-Length

# KCNH6 (Human) Recombinant Protein (P01)

Catalog # H00081033-P01

Size 25 ug, 10 ug

## Applications



## Specification

### Product Description

Human KCNH6 full-length ORF ( AAH06334, 1 a.a. - 502 a.a.) recombinant protein with GST-tag at N-terminal.

### Sequence

MPVRRGHVAPQNTYLDTIIRKFEGQSRKFLIANAQMENCAIYCNDGFCELFGYSRVEVMQQPCTC  
DFLTGPNTPSSAVSRLAQALLGAEECKVDILYRKDASSFRCLVDVVPVKNEDGAVIMFILNFEDL  
AQLLAKCSSRSLSQRLLSQSFLGSESHGRPGPGGTGRGKYRTISQIPQFTLNFEFNLEKHR  
SSSTEIEIIAPHKVVERTQNVTEKVTQVLSLGADVLPEYKLQAPRIHRWTILHYSPPKAVWDWLILL  
LVIYAVFTPYSAAFLSDQDESRRGACSYTCSPLTVVDLVDIMFVVDVINFRTTYVNTNDEVVSH  
PRRIAVHYFKGWFLIDMVAAPFDLLIFRTGSDETTTLIGLLKTARLLRLVRVARKLDYSEYGAAVLF  
LLMCTFALIAHWLACIWAIGNVERPYLEHKIGWLDLSGVQLGKRYNGSDPASGPSVQDKYVTALY  
FTFSSLTSGFGNVSPNTNSEKVFVSIKVMIGCE

### Host

Wheat Germ (in vitro)

### Theoretical MW (kDa)

80.96

### Preparation Method

[in vitro wheat germ expression system](#)

### Purification

Glutathione Sepharose 4 Fast Flow

### Quality Control Testing

12.5% SDS-PAGE Stained with Coomassie Blue.

### Storage Buffer

50 mM Tris-HCl, 10 mM reduced Glutathione, pH=8.0 in the elution buffer.

**Storage Instruction**

Store at -80°C. Aliquot to avoid repeated freezing and thawing.

**Note**

Best use within three months from the date of receipt of this protein.

## Applications

- Enzyme-linked Immunoabsorbent Assay
- Western Blot (Recombinant protein)
- Antibody Production
- Protein Array

## Gene Info — KCNH6

**Entrez GeneID**[81033](#)**GeneBank Accession#**[BC006334](#)**Protein Accession#**[AAH06334](#)**Gene Name**

KCNH6

**Gene Alias**

ERG2, HERG2, Kv11.2

**Gene Description**

potassium voltage-gated channel, subfamily H (eag-related), member 6

**Omim ID**[608168](#)**Gene Ontology**[Hyperlink](#)**Gene Summary**

Voltage-gated potassium (Kv) channels represent the most complex class of voltage-gated ion channels from both functional and structural standpoints. Their diverse functions include regulating neurotransmitter release, heart rate, insulin secretion, neuronal excitability, epithelial electrolyte transport, smooth muscle contraction, and cell volume. This gene encodes a member of the potassium channel, voltage-gated, subfamily H. This member is a pore-forming (alpha) subunit. Several alternatively spliced transcript variants have been identified from this gene, but the full-length nature of only two transcript variants has been determined. [provided by RefSeq]

**Other Designations**

eag related protein 2|eag-related gene member 2|ether-a-go-go related gene potassium channel 2|potassium voltage-gated channel, subfamily H, member 6