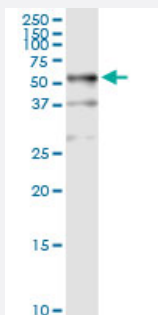


TUBB1 (Human) IP-WB Antibody Pair

Catalog # H00081027-PW1

Size 1 Set

Applications



Immunoprecipitation of TUBB1 transfected lysate using rabbit polyclonal anti-TUBB1 and Protein A Magnetic Bead ([U0007](#)), and immunoblotted with mouse purified polyclonal anti-TUBB1.

Specification

Product Description	This IP-WB antibody pair set comes with one antibody for immunoprecipitation and another to detect the precipitated protein in western blot.
Reactivity	Human
Interspecies Antigen Sequence	Mouse (91); Rat (91)
Quality Control Testing	Immunoprecipitation-Western Blot (IP-WB) Immunoprecipitation of TUBB1 transfected lysate using rabbit polyclonal anti-TUBB1 and Protein A Magnetic Bead (U0007), and immunoblotted with mouse purified polyclonal anti-TUBB1.
Supplied Product	Antibody pair set content: 1. Antibody pair for IP: rabbit polyclonal anti-TUBB1 (300 ul) 2. Antibody pair for WB: mouse purified polyclonal anti-TUBB1 (50 ug)
Storage Instruction	Store reagents of the antibody pair set at -20°C or lower. Please aliquot to avoid repeated freeze thaw cycle. Reagents should be returned to -20°C storage immediately after use.

Applications

- Immunoprecipitation-Western Blot

[Protocol Download](#)

Gene Info — TUBB1

Entrez GeneID [81027](#)

Gene Name TUBB1

Gene Alias dJ543J19.4

Gene Description tubulin, beta 1

Gene Ontology [Hyperlink](#)

Gene Summary Microtubules are involved in a wide variety of cellular processes, including mitosis, morphogenesis, platelet formation, and mobility of cilia and flagella. Circulating platelets carry a single marginal microtubule coil that is wound in 8 to 12 turns and is responsible for platelet shape. TUBB1 is the major beta-tubulin expressed in platelets and megakaryocytes and is required for optimal platelet assembly (Wang et al., 1986 [PubMed 3782288]; Schulze et al., 2004 [PubMed 15315966]).[supplied by OMIM]

Other Designations OTTHUMP00000031411|beta tubulin 1, class VI

Pathway

- [Gap junction](#)
- [Pathogenic Escherichia coli infection - EHEC](#)

Disease

- [Cardiovascular Diseases](#)
- [Genetic Predisposition to Disease](#)
- [Hemorrhagic Disorders](#)
- [Myocardial Infarction](#)
- [Thrombocytopenia](#)

- [Thrombosis](#)