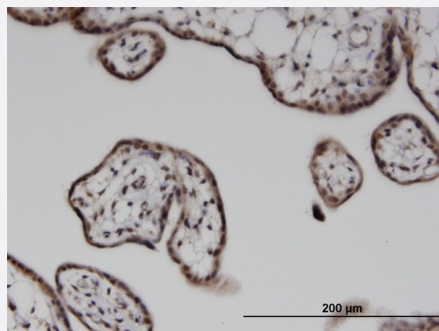


ILKAP monoclonal antibody (M02), clone 3B5

Catalog # H00080895-M02

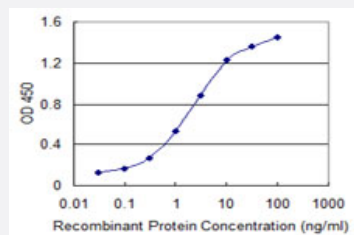
Size 100 ug

Applications



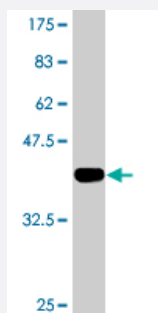
Immunohistochemistry (Formalin/PFA-fixed paraffin-embedded sections)

Immunoperoxidase of monoclonal antibody to ILKAP on formalin-fixed paraffin-embedded human placenta. [antibody concentration 3 ug/ml]



Sandwich ELISA (Recombinant protein)

Detection limit for recombinant GST tagged ILKAP is 0.03 ng/ml as a capture antibody.



Western Blot detection against Immunogen (36.74 KDa) .

Specification

Product Description

Mouse monoclonal antibody raised against a partial recombinant ILKAP.

Immunogen	ILKAP (NP_110395, 293 a.a. ~ 392 a.a) partial recombinant protein with GST tag. MW of the GST tag alone is 26 KDa.
Sequence	IGDGQYKRCGVTSVPDIRRCQLTPNDRFILLACDGLFKVFTPEEAVNFILSCLEDEKIQTREGKSAA DARYEAACNRLANKAVQRGSADNVTVMVVRIGH
Host	Mouse
Reactivity	Human
Interspecies Antigen Sequence	Mouse (95); Rat (95)
Isotype	IgG2b Kappa
Quality Control Testing	Antibody Reactive Against Recombinant Protein. Western Blot detection against Immunogen (36.74 KDa) .
Storage Buffer	In 1x PBS, pH 7.4
Storage Instruction	Store at -20°C or lower. Aliquot to avoid repeated freezing and thawing.

Applications

- Western Blot (Recombinant protein)

[Protocol Download](#)

- Immunohistochemistry (Formalin/PFA-fixed paraffin-embedded sections)

Immunoperoxidase of monoclonal antibody to ILKAP on formalin-fixed paraffin-embedded human placenta. [antibody concentration 3 ug/ml]

[Protocol Download](#)

- Sandwich ELISA (Recombinant protein)

Detection limit for recombinant GST tagged ILKAP is 0.03 ng/ml as a capture antibody.

[Protocol Download](#)

- ELISA

Gene Info — ILKAP

Entrez GeneID

[80895](#)

GeneBank Accession#	NM_030768
Protein Accession#	NP_110395
Gene Name	ILKAP
Gene Alias	DKFZp434J2031, FLJ10181, MGC4846, PP2C-DELTA
Gene Description	integrin-linked kinase-associated serine/threonine phosphatase 2C
Gene Ontology	Hyperlink
Gene Summary	<p>The protein encoded by this gene is a protein serine/threonine phosphatase of the PP2C family. This protein can interact with integrin-linked kinase (ILK/ILK1), a regulator of integrin mediated signaling, and regulate the kinase activity of ILK. Through the interaction with ILK, this protein may selectively affect the signaling process of ILK-mediated glycogen synthase kinase 3 beta (GSK3beta), and thus participate in Wnt signaling pathway. [provided by RefSeq]</p>
Other Designations	integrin-linked kinase-associated protein phosphatase 2C protein phosphatase 2c, delta isozyme