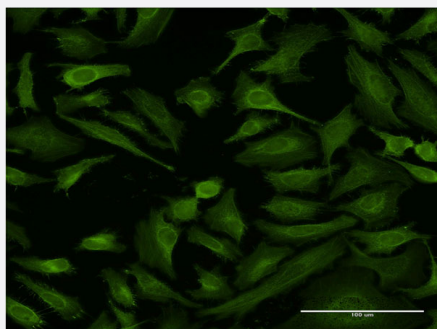


# ABTB1 monoclonal antibody (M02), clone 2A10

Catalog # H00080325-M02

Size 100 ug

## Applications



### Immunofluorescence

Immunofluorescence of monoclonal antibody to ABTB1 on HeLa cell . [antibody concentration 10 ug/ml]

## Specification

<b>Product Description</b>	Mouse monoclonal antibody raised against a partial recombinant ABTB1.
<b>Immunogen</b>	ABTB1 (NP_742024, 271 a.a. ~ 370 a.a) partial recombinant protein with GST tag. MW of the GST tag alone is 26 KDa.
<b>Sequence</b>	CPDICFRVAGCSFLCHKAFFCGRSDYFRALLDDHFRSEEPATSGGPPAVTLHGISPDPVFTHVLY YMYSDHTELSPEAAAYDVLVSADMYLLPGLKRLCGR
<b>Host</b>	Mouse
<b>Reactivity</b>	Human
<b>Interspecies Antigen Sequence</b>	Mouse (92); Rat (93)
<b>Isotype</b>	IgG2a Kappa
<b>Quality Control Testing</b>	Antibody Reactive Against Recombinant Protein.
<b>Storage Buffer</b>	In 1x PBS, pH 7.4
<b>Storage Instruction</b>	Store at -20°C or lower. Aliquot to avoid repeated freezing and thawing.

## Applications

- ELISA
- Immunofluorescence

Immunofluorescence of monoclonal antibody to ABTB1 on HeLa cell . [antibody concentration 10 ug/ml]

## Gene Info — ABTB1

**Entrez GeneID** [80325](#)

**GeneBank Accession#** [NM\\_172027](#)

**Protein Accession#** [NP\\_742024](#)

**Gene Name** ABTB1

**Gene Alias** BPOZ, Btb3, EF1ABP, MGC20585, PP2259

**Gene Description** ankyrin repeat and BTB (POZ) domain containing 1

**Omim ID** [608308](#)

**Gene Ontology** [Hyperlink](#)

**Gene Summary** This gene encodes a protein with an ankyrin repeat region and two BTB/POZ domains, which are thought to be involved in protein-protein interactions. Expression of this gene is activated by the p hosphatase and tensin homolog, a tumor suppressor. Alternate splicing results in three transcript variants encoding different isoforms. [provided by RefSeq]

**Other Designations** elongation factor 1A binding protein