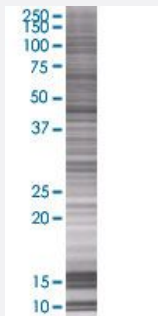


GKAP1 293T Cell Transient Overexpression Lysate(Denatured)

Catalog # H00080318-T01

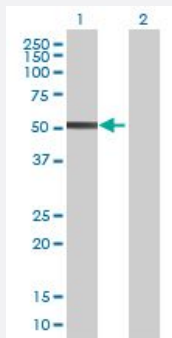
Size 100 uL

Applications



SDS-PAGE Gel

GKAP1 transfected lysate.



Western Blot

Lane 1: GKAP1 transfected lysate (40.37 KDa)

Lane 2: Non-transfected lysate.

Specification

Transfected Cell Line	293T
Plasmid	pCMV-GKAP1 full-length
Host	Human
Theoretical MW (kDa)	40.37
Interspecies Antigen Sequence	Mouse (87); Rat (90)

Quality Control Testing

Transient overexpression cell lysate was tested with Anti-GKAP1 antibody ([H00080318-B01](#)) by Western Blots.
SDS-PAGE Gel
GKAP1 transfected lysate.
Western Blot
Lane 1: GKAP1 transfected lysate (40.37 KDa)
Lane 2: Non-transfected lysate.

Storage Buffer

1X Sample Buffer (50 mM Tris-HCl, 2% SDS, 10% glycerol, 300 mM 2-mercaptoethanol, 0.01% Bromophenol blue)

Storage Instruction

Store at -80°C. Aliquot to avoid repeated freezing and thawing.

Applications

- Western Blot

Gene Info — GKAP1

Entrez GeneID[80318](#)**GeneBank Accession#**[NM_025211.2](#)**Protein Accession#**[NP_079487.2](#)**Gene Name**

GKAP1

Gene Alias

FKSG21, FLJ25469, GKAP42

Gene Description

G kinase anchoring protein 1

Omim ID[611356](#)**Gene Ontology**[Hyperlink](#)**Gene Summary**

This gene encodes a protein that is highly similar to the mouse cGMP-dependent protein kinase anchoring protein 42kDa. The mouse protein has been found to localize with the Golgi and recruit cGMP-dependent protein kinase I alpha to the Golgi in mouse testes. It is thought to play a role in germ cell development. Transcript variants encoding different isoforms have been found for this gene. [provided by RefSeq]

Other Designations

cGMP-dependent protein kinase anchoring protein 42kDa|protein kinase anchoring protein GKAP42