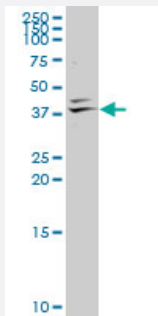


GKAP1 polyclonal antibody (A01)

Catalog # H00080318-A01

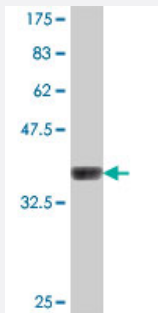
Size 50 uL

Applications



Western Blot (Tissue lysate)

GKAP1 polyclonal antibody (A01), Lot # 060613JCS1. Western Blot analysis of GKAP1 expression in human ovarian cancer.



Western Blot detection against Immunogen (37.11 kDa) .

Specification

Product Description	Mouse polyclonal antibody raised against a partial recombinant GKAP1.
Immunogen	GKAP1 (NP_079487, 151 a.a. ~ 250 a.a) partial recombinant protein with GST tag.
Sequence	AENTSTQSKVMNKKDKRKNHQQGKDRPLTVSLKDFHSEDHISKKTEELSSSQTLSDGGFFNRLE DDVHKILIREKRREQLTEYNGTDNCTAHEHNQEVVL
Host	Mouse
Reactivity	Human
Interspecies Antigen Sequence	Mouse (87); Rat (90)

Quality Control Testing

Antibody Reactive Against Recombinant Protein.
Western Blot detection against Immunogen (37.11 KDa) .

Storage Buffer

50 % glycerol

Storage Instruction

Store at -20°C or lower. Aliquot to avoid repeated freezing and thawing.

Applications

- Western Blot (Tissue lysate)

GKAP1 polyclonal antibody (A01), Lot # 060613JCS1. Western Blot analysis of GKAP1 expression in human ovarian cancer.

[Protocol Download](#)

- Western Blot (Recombinant protein)

[Protocol Download](#)

- ELISA

Gene Info — GKAP1

Entrez GeneID

[80318](#)

GeneBank Accession#

[NM_025211](#)

Protein Accession#

[NP_079487](#)

Gene Name

GKAP1

Gene Alias

FKSG21, FLJ25469, GKAP42

Gene Description

G kinase anchoring protein 1

Omim ID

[611356](#)

Gene Ontology

[Hyperlink](#)

Gene Summary

This gene encodes a protein that is highly similar to the mouse cGMP-dependent protein kinase anchoring protein 42kDa. The mouse protein has been found to localize with the Golgi and recruit cGMP-dependent protein kinase I alpha to the Golgi in mouse testes. It is thought to play a role in germ cell development. Transcript variants encoding different isoforms have been found for this gene. [provided by RefSeq]

Other Designations

cGMP-dependent protein kinase anchoring protein 42kDa|protein kinase anchoring protein GKA
P42
