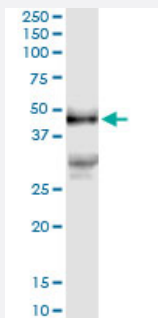


PDGFD (Human) IP-WB Antibody Pair

Catalog # H00080310-PW3

Size 1 Set

Applications



Immunoprecipitation of PDGFD transfected lysate using rabbit polyclonal anti-PDGFD and Protein A Magnetic Bead ([U0007](#)), and immunoblotted with mouse purified polyclonal anti-PDGFD.

Specification

Product Description	This IP-WB antibody pair set comes with one antibody for immunoprecipitation and another to detect the precipitated protein in western blot.
Reactivity	Human
Quality Control Testing	Immunoprecipitation-Western Blot (IP-WB) Immunoprecipitation of PDGFD transfected lysate using rabbit polyclonal anti-PDGFD and Protein A Magnetic Bead (U0007), and immunoblotted with mouse purified polyclonal anti-PDGFD.
Supplied Product	Antibody pair set content: 1. Antibody pair for IP: rabbit polyclonal anti-PDGFD (300 ul) 2. Antibody pair for WB: mouse purified polyclonal anti-PDGFD (50 ug)
Storage Instruction	Store reagents of the antibody pair set at -20°C or lower. Please aliquot to avoid repeated freeze thaw cycle. Reagents should be returned to -20°C storage immediately after use.

Applications

- Immunoprecipitation-Western Blot

[Protocol Download](#)

Gene Info — PDGFD

Entrez GeneID [80310](#)

Gene Name PDGFD

Gene Alias IEGF, MGC26867, MSTP036, SCDGF-B, SCDGFB

Gene Description platelet derived growth factor D

Omim ID [609673](#)

Gene Ontology [Hyperlink](#)

Gene Summary The protein encoded by this gene is a member of the platelet-derived growth factor family. The four members of this family are mitogenic factors for cells of mesenchymal origin and are characterized by a core motif of eight cysteines, seven of which are found in this factor. This gene product only forms homodimers and, therefore, does not dimerize with the other three family members. It differs from alpha and beta members of this family in having an unusual N-terminal domain, the CUB domain. Two splice variants have been identified for this gene. [provided by RefSeq]

Other Designations iris-expressed growth factor|spinal cord derived growth factor B|spinal cord-derived growth factor-B

Pathway

- [Cytokine-cytokine receptor interaction](#)
- [Focal adhesion](#)
- [Gap junction](#)
- [Melanoma](#)
- [Prostate cancer](#)
- [Regulation of actin cytoskeleton](#)

Disease

- [Atherosclerosis](#)
- [Brain Ischemia](#)
- [Cardiovascular Diseases](#)

- [Diabetes Mellitus](#)
- [Edema](#)
- [Genetic Diseases](#)
- [Hypertension](#)
- [Stroke](#)
- [Tobacco Use Disorder](#)