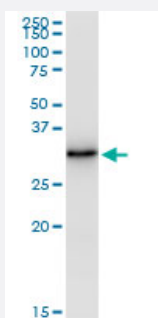


EFHD1 (Human) IP-WB Antibody Pair

Catalog # H00080303-PW1

Size 1 Set

Applications



Immunoprecipitation of EFHD1 transfected lysate using rabbit polyclonal anti-EFHD1 and Protein A Magnetic Bead ([U0007](#)), and immunoblotted with mouse polyclonal anti-EFHD1.

Specification

Product Description	This IP-WB antibody pair set comes with one antibody for immunoprecipitation and another to detect the precipitated protein in western blot.
Reactivity	Human
Interspecies Antigen Sequence	Mouse (82); Rat (78)
Quality Control Testing	Immunoprecipitation-Western Blot (IP-WB) Immunoprecipitation of EFHD1 transfected lysate using rabbit polyclonal anti-EFHD1 and Protein A Magnetic Bead (U0007), and immunoblotted with mouse polyclonal anti-EFHD1.
Supplied Product	Antibody pair set content: 1. Antibody pair for IP: rabbit polyclonal anti-EFHD1 (300 ul) 2. Antibody pair for WB: mouse polyclonal anti-EFHD1 (50 ul)
Storage Instruction	Store reagents of the antibody pair set at -20°C or lower. Please aliquot to avoid repeated freeze thaw cycle. Reagents should be returned to -20°C storage immediately after use.

Applications

- Immunoprecipitation-Western Blot

[Protocol Download](#)

Gene Info — EFHD1

Entrez GeneID	80303
---------------	-----------------------

Gene Name	EFHD1
-----------	-------

Gene Alias	DKFZp781H0842, FLJ13612, MST133, MSTP133, PP3051
------------	--

Gene Description	EF-hand domain family, member D1
------------------	----------------------------------

Omim ID	611617
---------	------------------------

Gene Ontology	Hyperlink
---------------	---------------------------

Gene Summary	EFHD1 is an EF-hand domain-containing protein that displays increased expression during neuronal differentiation (Tominaga and Tomooka, 2002 [PubMed 12270117]).[supplied by OMIM]
--------------	--

Other Designations	EF hand domain containing 1 EF hand domain family, member D1
--------------------	--