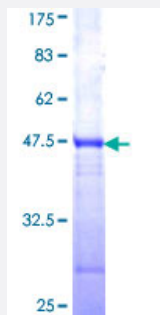


ITPKC (Human) Recombinant Protein (Q01)

Catalog # H00080271-Q01

Size 25 ug, 10 ug

Applications



Specification

Product Description	Human ITPKC partial ORF (NP_079470, 63 a.a. - 161 a.a.) recombinant protein with GST-tag at N-terminal.
Sequence	EGSSLHSEPERAGLG PAPGTES PQAEFWTDGQTEPAAAGLGVETERPKQKTEPDRSSLRTHLE WSWSELETTCLWTETGTDGLWTDPHRSDLQFQPEEA
Host	Wheat Germ (in vitro)
Theoretical MW (kDa)	36.63
Interspecies Antigen Sequence	Mouse (75); Rat (75)
Preparation Method	in vitro wheat germ expression system
Purification	Glutathione Sepharose 4 Fast Flow
Quality Control Testing	12.5% SDS-PAGE Stained with Coomassie Blue.
Storage Buffer	50 mM Tris-HCl, 10 mM reduced Glutathione, pH=8.0 in the elution buffer.
Storage Instruction	Store at -80°C. Aliquot to avoid repeated freezing and thawing.
Note	Best use within three months from the date of receipt of this protein.

Applications

- Enzyme-linked Immunoabsorbent Assay
- Western Blot (Recombinant protein)
- Antibody Production
- Protein Array

Gene Info — ITPKC

Entrez GeneID [80271](#)

GeneBank Accession# [NM_025194](#)

Protein Accession# [NP_079470](#)

Gene Name ITPKC

Gene Alias IP3KC

Gene Description inositol 1,4,5-trisphosphate 3-kinase C

Omim ID [606476](#)

Gene Ontology [Hyperlink](#)

Gene Summary This gene encodes a member of the inositol 1,4,5-trisphosphate [Ins(1,4,5)P(3)] 3-kinase family of enzymes that catalyze the phosphorylation of inositol 1,4,5-trisphosphate to 1,3,4,5-tetrakisphosphate. The encoded protein is localized to the nucleus and cytoplasm and has both nuclear import and nuclear export activity. Single nucleotide polymorphisms in this gene are associated with Kawasaki disease

Other Designations -

Disease

- [Mucocutaneous Lymph Node Syndrome](#)
- [Tobacco Use Disorder](#)