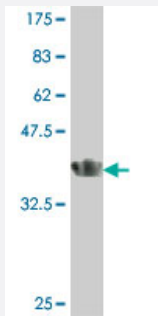


ITPKC polyclonal antibody (A01)

Catalog # H00080271-A01

Size 50 uL

Applications



Western Blot detection against Immunogen (37 KDa) .

Specification

Product Description	Mouse polyclonal antibody raised against a partial recombinant ITPKC.
Immunogen	ITPKC (NP_079470, 63 a.a. ~ 161 a.a) partial recombinant protein with GST tag.
Sequence	EGSSLHSEPERAGLG PAPGTES PQAEFWTDGQTEPAAAGLG VETERPKQKTEPDRSSLRTHLE WSWSELETTCLWTETGTDGLWTDPHRSDLQFPQEEA
Host	Mouse
Reactivity	Human
Interspecies Antigen Sequence	Mouse (75); Rat (75)
Quality Control Testing	Antibody Reactive Against Recombinant Protein. Western Blot detection against Immunogen (37 KDa) .
Storage Buffer	50 % glycerol
Storage Instruction	Store at -20°C or lower. Aliquot to avoid repeated freezing and thawing.

Applications

- Western Blot (Recombinant protein)

[Protocol Download](#)

- ELISA

Gene Info — ITPKC

Entrez GeneID [80271](#)

GeneBank Accession# [NM_025194](#)

Protein Accession# [NP_079470](#)

Gene Name ITPKC

Gene Alias IP3KC

Gene Description inositol 1,4,5-trisphosphate 3-kinase C

Omim ID [606476](#)

Gene Ontology [Hyperlink](#)

Gene Summary This gene encodes a member of the inositol 1,4,5-trisphosphate [Ins(1,4,5)P(3)] 3-kinase family of enzymes that catalyze the phosphorylation of inositol 1,4,5-trisphosphate to 1,3,4,5-tetrakisphosphate. The encoded protein is localized to the nucleus and cytoplasm and has both nuclear import and nuclear export activity. Single nucleotide polymorphisms in this gene are associated with Kawasaki disease

Other Designations -

Disease

- [Mucocutaneous Lymph Node Syndrome](#)
- [Tobacco Use Disorder](#)