

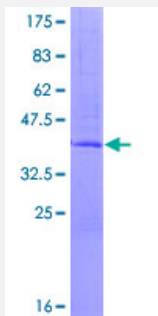
Full-Length

C1orf22 (Human) Recombinant Protein (P01)

Catalog # H00080267-P01

Size 25 ug, 10 ug

Applications



Specification

Product Description	Human C1orf22 full-length ORF (AAH16464.1, 1 a.a. - 122 a.a.) recombinant protein with GST-tag at N-terminal.
Sequence	MGGFKYGDEQPRSDWRSYRRNLEHAVLELTLFKTVPSKMEIHSSPFKCSTAPPCNTSGQGKITE HSCEPDFCCLWIDKKQNSFSSGVGNRSLDSSLIKGSSPFLVGVGSGFGKMHPSVAF
Host	Wheat Germ (in vitro)
Theoretical MW (kDa)	39.9
Interspecies Antigen Sequence	Mouse (46); Rat (46)
Preparation Method	in vitro wheat germ expression system
Purification	Glutathione Sepharose 4 Fast Flow
Quality Control Testing	12.5% SDS-PAGE Stained with Coomassie Blue.
Storage Buffer	50 mM Tris-HCl, 10 mM reduced Glutathione, pH=8.0 in the elution buffer.
Storage Instruction	Store at -80°C. Aliquot to avoid repeated freezing and thawing.
Note	Best use within three months from the date of receipt of this protein.

Applications

- Enzyme-linked Immunoabsorbent Assay
- Western Blot (Recombinant protein)
- Antibody Production
- Protein Array

Gene Info — EDEM3

Entrez GeneID	80267
GeneBank Accession#	BC016464.1
Protein Accession#	AAH16464.1
Gene Name	EDEM3
Gene Alias	C1orf22
Gene Description	ER degradation enhancer, mannosidase alpha-like 3
Omim ID	610214
Gene Ontology	Hyperlink
Gene Summary	Quality control in the endoplasmic reticulum (ER) ensures that only properly folded proteins are retained in the cell through recognition and degradation of misfolded or unassembled proteins. EDEM3 belongs to a group of proteins that accelerate degradation of misfolded glycoproteins in the ER (Hirao et al., 2006 [PubMed 16431915]).[supplied by OMIM]
Other Designations	ER degradation-enhancing -mannosidase-like protein 3