

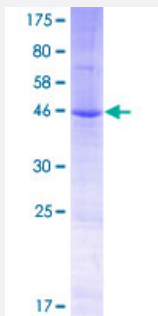
Full-Length

## TM2D3 (Human) Recombinant Protein (P01)

Catalog # H00080213-P01

Size 25 ug, 10 ug

### Applications



### Specification

#### Product Description

Human TM2D3 full-length ORF ( AAH08873.1, 1 a.a. - 221 a.a.) recombinant protein with GST-tag at N-terminal.

#### Sequence

MAGGVRPLRGLRALCRVLLFLSQFCILSGGESTTEIPPYVMKCPSNGLCSRLPADCIDCTTNFSCTY  
GKPVTFDCAVKPSVTCVDQDFKSQKNFIINMTCRFCWQLPETDYECTNSTSCMTVSCPRQRYPA  
NCTVRDHHVHCLGNRTFPKMLYCNWTGGYKWSTALALSITLGGFGADRFYLGQWREGLGKLFSFG  
GLGIWTLIDVLLIGVGYVGPADGSLYI

#### Host

Wheat Germ (in vitro)

#### Theoretical MW (kDa)

50.8

#### Preparation Method

[in vitro wheat germ expression system](#)

#### Purification

Glutathione Sepharose 4 Fast Flow

#### Quality Control Testing

12.5% SDS-PAGE Stained with Coomassie Blue.

#### Storage Buffer

50 mM Tris-HCl, 10 mM reduced Glutathione, pH=8.0 in the elution buffer.

#### Storage Instruction

Store at -80°C. Aliquot to avoid repeated freezing and thawing.

#### Note

Best use within three months from the date of receipt of this protein.

## Applications

- Enzyme-linked Immunoabsorbent Assay
- Western Blot (Recombinant protein)
- Antibody Production
- Protein Array

## Gene Info — TM2D3

**Entrez GeneID** [80213](#)

**GeneBank Accession#** [BC008873.2](#)

**Protein Accession#** [AAH08873.1](#)

**Gene Name** TM2D3

**Gene Alias** BLP2

**Gene Description** TM2 domain containing 3

**Omim ID** [610014](#)

**Gene Ontology** [Hyperlink](#)

**Gene Summary** The protein encoded by this gene contains a structural module related to that of the seven transmembrane domain G protein-coupled receptor superfamily. This protein has sequence and structural similarities to the beta-amyloid binding protein (BBP), but, unlike BBP, it does not regulate a response to beta-amyloid peptide. This protein may have regulatory roles in cell death or proliferation signal cascades. Several alternatively spliced transcript variants of this gene are described but the full length nature of some variants has not been determined. Multiple polyadenylation sites have been found in this gene. [provided by RefSeq]

**Other Designations** BBP-like protein 2