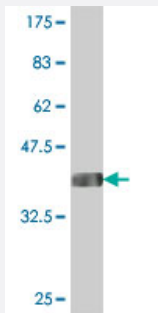


DRF1 polyclonal antibody (A01)

Catalog # H00080174-A01

Size 50 uL

Applications



Western Blot detection against Immunogen (37 KDa) .

Specification

Product Description	Mouse polyclonal antibody raised against a partial recombinant DRF1.
Immunogen	DRF1 (NP_663696, 201 a.a. ~ 299 a.a) partial recombinant protein with GST tag.
Sequence	VKKQQPKKPEGTCPAAESRTRKVARLKAPFLKIEDES RKFRPFHHQFKSFPEISFLGPKDASPFE APTTLGSMHHTRESKDGEPSRSAHTMPRRKKG
Host	Mouse
Reactivity	Human
Quality Control Testing	Antibody Reactive Against Recombinant Protein. Western Blot detection against Immunogen (37 KDa) .
Storage Buffer	50 % glycerol
Storage Instruction	Store at -20°C or lower. Aliquot to avoid repeated freezing and thawing.

Applications

- Western Blot (Recombinant protein)

[Protocol Download](#)

- ELISA

Gene Info — DBF4B

Entrez GeneID [80174](#)

GeneBank Accession# [NM_145663](#)

Protein Accession# [NP_663696](#)

Gene Name DBF4B

Gene Alias ASKL1, DRF1, FLJ13087, MGC15009, ZDBF1B, chifb

Gene Description DBF4 homolog B (S. cerevisiae)

Omim ID [611661](#)

Gene Ontology [Hyperlink](#)

Gene Summary This gene encodes a regulator of the CDC7-like 1 protein, a serine-threonine kinase which links cell cycle regulation to genome duplication. This protein localizes to the nucleus and its expression is cell cycle-regulated. Alternative splicing of this gene results in two transcript variants encoding different isoforms. Additional transcript variants have been described, but their full length sequences have not been determined. [provided by RefSeq]

Other Designations DBF4 homolog B|Dbf4-related factor 1|activator of S-phase kinase-like protein 1|chiffon homolog B|zinc finger, DBF-type containing 1B