

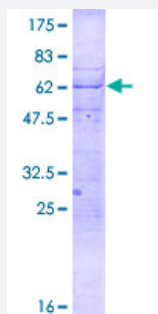
Full-Length

CENPT (Human) Recombinant Protein (P01)

Catalog # H00080152-P01

Size 25 ug, 10 ug

Applications



Specification

Product Description

Human CENPT full-length ORF (NP_079358.1, 1 a.a. - 299 a.a.) recombinant protein with GST-tag at N-terminal.

Sequence

MADHNPDS DSTPRTLRLRLVLD TADPRTPRRPR SARAGARRALLETASPRKLSGQTRTIARGRSH
GARSVGRSAHIQASGHLEEQTPRTLKNILLTAPESSILMPESVVKVPAPQAVQPSRQESSCGS
LELQLPELEPPTTLAPGLLAPGRRKQRLRLSVFQQGVDQGLSLSQEPQGNADASSLTRSLNLTFA
TPLQPQSVQRPG LARRPPARRAVDVGAFLRDLRDTSLAPPNVLEDTQPF SQPMVGSPNVYHSL
PCTPHTGAEDAEQAAGRKTQSSGPG LQKNSECVALVAWSQI

Host

Wheat Germ (in vitro)

Theoretical MW (kDa)

58.6

Interspecies Antigen Sequence

Mouse (58); Rat (56)

Preparation Method

[in vitro wheat germ expression system](#)

Purification

Glutathione Sepharose 4 Fast Flow

Quality Control Testing

12.5% SDS-PAGE Stained with Coomassie Blue.

Storage Buffer

50 mM Tris-HCl, 10 mM reduced Glutathione, pH=8.0 in the elution buffer.

Storage Instruction

Store at -80°C. Aliquot to avoid repeated freezing and thawing.

Note

Best use within three months from the date of receipt of this protein.

Applications

- Enzyme-linked Immunoabsorbent Assay
- Western Blot (Recombinant protein)
- Antibody Production
- Protein Array

Gene Info — CENPT

Entrez GeneID[80152](#)**GeneBank Accession#**[NM_025082.1](#)**Protein Accession#**[NP_079358.1](#)**Gene Name**

CENPT

Gene Alias

C16orf56, CENP-T, FLJ13111, FLJ43376

Gene Description

centromere protein T

Omim ID[611510](#)**Gene Ontology**[Hyperlink](#)**Gene Summary**

The centromere is a specialized chromatin domain, present throughout the cell cycle, that acts as a platform on which the transient assembly of the kinetochore occurs during mitosis. All active centromeres are characterized by the presence of long arrays of nucleosomes in which CENPA (MIM 117139) replaces histone H3 (see MIM 601128). CENPT is an additional factor required for centromere assembly (Foltz et al., 2006 [PubMed 16622419]).[supplied by OMIM]

Other Designations

-