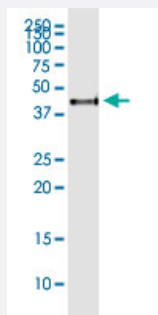


ASRGL1 (Human) IP-WB Antibody Pair

Catalog # H00080150-PW3

Size 1 Set

Applications



Immunoprecipitation of ASRGL1 transfected lysate using rabbit polyclonal anti-ASRGL1 and Protein A Magnetic Bead ([U0007](#)), and immunoblotted with mouse purified polyclonal anti-ASRGL1.

Specification

Product Description	This IP-WB antibody pair set comes with one antibody for immunoprecipitation and another to detect the precipitated protein in western blot.
Reactivity	Human
Interspecies Antigen Sequence	Mouse (78); Rat (77)
Quality Control Testing	Immunoprecipitation-Western Blot (IP-WB) Immunoprecipitation of ASRGL1 transfected lysate using rabbit polyclonal anti-ASRGL1 and Protein A Magnetic Bead (U0007), and immunoblotted with mouse purified polyclonal anti-ASRGL1.
Supplied Product	Antibody pair set content: 1. Antibody pair for IP: rabbit polyclonal anti-ASRGL1 (300 ul) 2. Antibody pair for WB: mouse purified polyclonal anti-ASRGL1 (50 ug)
Storage Instruction	Store reagents of the antibody pair set at -20°C or lower. Please aliquot to avoid repeated freeze thaw cycle. Reagents should be returned to -20°C storage immediately after use.

Applications

- Immunoprecipitation-Western Blot

[Protocol Download](#)

Gene Info — ASRGL1

Entrez GeneID	80150
Gene Name	ASRGL1
Gene Alias	ALP, ALP1, FLJ22316
Gene Description	asparaginase like 1
Omim ID	609212
Gene Ontology	Hyperlink
Other Designations	asparaginase-like 1 protein

Pathway

- [Alanine](#)
- [Cyanoamino acid metabolism](#)
- [Metabolic pathways](#)
- [Nitrogen metabolism](#)