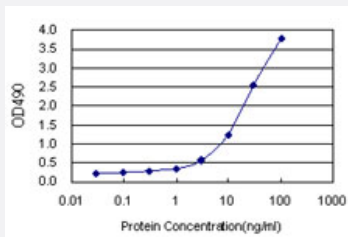


# OBFC1 (Human) Matched Antibody Pair

Catalog # H00079991-AP22

Size 1 Set

## Applications



Sandwich ELISA detection sensitivity ranging from 0.3 ng/ml to 100 ng/ml.

## Specification

<b>Product Description</b>	This antibody pair set comes with a matched antibody pair to detect and quantify the protein level of human OBFC1.
<b>Reactivity</b>	Human
<b>Interspecies Antigen Sequence</b>	Mouse (70); Rat (64)
<b>Quality Control Testing</b>	Standard curve using recombinant protein ( H00079991-P01 ) as an analyte. Sandwich ELISA detection sensitivity ranging from 0.3 ng/ml to 100 ng/ml.
<b>Supplied Product</b>	Antibody pair set content: 1. Capture antibody: rabbit MaxPab® affinity purified polyclonal anti-OBFC1 (100 ug) 2. Detection antibody: mouse purified polyclonal anti-OBFC1 (20 ug) *Reagents are sufficient for at least 1-2 x 96 well plates using recommended protocols.
<b>Storage Instruction</b>	Store reagents of the antibody pair set at -20°C or lower. Please aliquot to avoid repeated freeze thaw cycle. Reagents should be returned to -20°C storage immediately after use.

## Applications

- [ELISA Pair \(Recombinant protein\)](#)

[Protocol Download](#)

## Gene Info — OBFC1

Entrez GeneID	<a href="#">79991</a>
Gene Name	OBFC1
Gene Alias	AAF-44, FLJ22559, RP11-541N10.2, RPA-32, bA541N10.2
Gene Description	oligonucleotide/oligosaccharide-binding fold containing 1
Gene Ontology	<a href="#">Hyperlink</a>
Other Designations	OTTHUMP00000020417 OTTHUMP00000020418 alpha accessory factor 44 replication protein A 32 kDa subunit

## Disease

- [Alzheimer Disease](#)
- [Cardiovascular Diseases](#)
- [Genetic Predisposition to Disease](#)