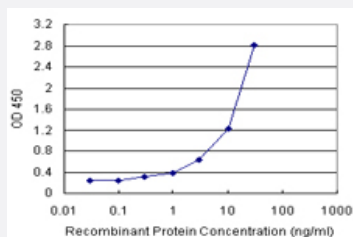


OBFC1 (Human) Matched Antibody Pair

Catalog # H00079991-AP11

Size 1 Set

Applications



Sandwich ELISA detection sensitivity ranging from 0.3 ng/ml to 100 ng/ml.

Specification

Product Description	This antibody pair set comes with a matched antibody pair to detect and quantify the protein level of human OBFC1.
Reactivity	Human
Interspecies Antigen Sequence	Mouse (70); Rat (64)
Quality Control Testing	Standard curve using recombinant protein (H00079991-P01) as an analyte. Sandwich ELISA detection sensitivity ranging from 0.3 ng/ml to 100 ng/ml.
Supplied Product	Antibody pair set content: 1. Capture antibody: rabbit MaxPab® affinity purified polyclonal anti-OBFC1 (100 ug) 2. Detection antibody: mouse monoclonal anti-OBFC1, IgG2a Kappa (20 ug) *Reagents are sufficient for at least 1-2 x 96 well plates using recommended protocols.
Storage Instruction	Store reagents of the antibody pair set at -20°C or lower. Please aliquot to avoid repeated freeze thaw cycle. Reagents should be returned to -20°C storage immediately after use.

Applications

- [ELISA Pair \(Recombinant protein\)](#)

[Protocol Download](#)

Gene Info — OBFC1

Entrez GeneID	79991
Gene Name	OBFC1
Gene Alias	AAF-44, FLJ22559, RP11-541N10.2, RPA-32, bA541N10.2
Gene Description	oligonucleotide/oligosaccharide-binding fold containing 1
Gene Ontology	Hyperlink
Other Designations	OTTHUMP00000020417 OTTHUMP00000020418 alpha accessory factor 44 replication protein A 32 kDa subunit

Disease

- [Alzheimer Disease](#)
- [Cardiovascular Diseases](#)
- [Genetic Predisposition to Disease](#)