

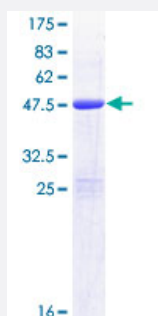
Full-Length

# BAALC (Human) Recombinant Protein (P01)

Catalog # H00079870-P01

Size 25 ug, 10 ug

## Applications



## Specification

Product Description	Human BAALC full-length ORF ( NP_079088.1, 1 a.a. - 145 a.a.) recombinant protein with GST-tag at N-terminal.
Sequence	MGCGGSRADAIEPRYYESWTRETESTWLTYTDSAPPSSAAAPDSGPEAGGLHSGMLEDGLPSN GVPRSTAPGGIPNPEKKTNCETQCPNPQSLSSGPLTQKQNGLQTTEAKRDAKRMPAKEVTINVT DSIQQMDRSRRITKNCVN
Host	Wheat Germ (in vitro)
Theoretical MW (kDa)	42
Preparation Method	<a href="#">in vitro wheat germ expression system</a>
Purification	Glutathione Sepharose 4 Fast Flow
Quality Control Testing	12.5% SDS-PAGE Stained with Coomassie Blue.
Storage Buffer	50 mM Tris-HCl, 10 mM reduced Glutathione, pH=8.0 in the elution buffer.
Storage Instruction	Store at -80°C. Aliquot to avoid repeated freezing and thawing.
Note	Best use within three months from the date of receipt of this protein.

## Applications

- Enzyme-linked Immunoabsorbent Assay
- Western Blot (Recombinant protein)
- Antibody Production
- Protein Array

## Gene Info — BAALC

Entrez GeneID [79870](#)

GeneBank Accession# [NM\\_024812.2](#)

Protein Accession# [NP\\_079088.1](#)

Gene Name BAALC

Gene Alias FLJ12015

Gene Description brain and acute leukemia, cytoplasmic

Omim ID [606602](#)

Gene Ontology [Hyperlink](#)

**Gene Summary** This gene was identified by gene expression studies in patients with acute myeloid leukemia (AML). The gene is conserved among mammals and is not found in lower organisms. Tissues that express this gene develop from the neuroectoderm. Multiple alternatively spliced transcript variants that encode different proteins have been described for this gene; however, some of the transcript variants are found only in AML cell lines. [provided by RefSeq]

Other Designations -