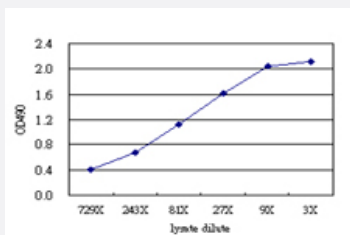


NEK11 (Human) Matched Antibody Pair

Catalog # H00079858-AP51

Size 1 Set

Applications



Sandwich ELISA detection sensitivity ranging from approximately 729x to 3x dilution of the NEK11 293T overexpression lysate (non-denatured).

Specification

Product Description	This antibody pair set comes with a matched antibody pair to detect and quantify the protein level of human NEK11.
Reactivity	Human
Interspecies Antigen Sequence	Mouse (73); Rat (70)
Quality Control Testing	Standard curve using NEK11 293T overexpression lysate (non-denatured) as an analyte. Sandwich ELISA detection sensitivity ranging from approximately 729x to 3x dilution of the NEK11 293T overexpression lysate (non-denatured).
Supplied Product	Antibody pair set content: 1. Capture antibody: mouse monoclonal anti-NEK11 (100 ug) 2. Detection antibody: rabbit purified polyclonal anti-NEK11 (50 ug) *Reagents are sufficient for at least 3-5 x 96 well plates using recommended protocols.
Storage Instruction	Store reagents of the antibody pair set at -20°C or lower. Please aliquot to avoid repeated freeze thaw cycle. Reagents should be returned to -20°C storage immediately after use.

Applications

- [ELISA Pair \(Transfected lysate\)](#)

[Protocol Download](#)

Gene Info — NEK11

Entrez GeneID [79858](#)

Gene Name NEK11

Gene Alias FLJ23495

Gene Description NIMA (never in mitosis gene a)- related kinase 11

Omim ID [609779](#)

Gene Ontology [Hyperlink](#)

Gene Summary This gene encodes a member of the never in mitosis gene A family of kinases. The encoded protein localizes to the nucleoli, and may function with NEK2A in the S-phase checkpoint. The encoded protein appears to play roles in DNA replication and response to genotoxic stress. Alternatively spliced transcript variants have been described

Other Designations -

Disease

- [Genetic Predisposition to Disease](#)
- [Kidney Failure](#)
- [Tobacco Use Disorder](#)