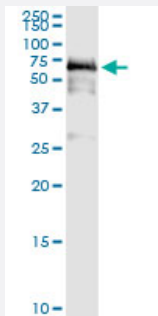


PDZD3 (Human) IP-WB Antibody Pair

Catalog # H00079849-PW1

Size 1 Set

Applications



Immunoprecipitation of PDZD3 transfected lysate using rabbit polyclonal anti-PDZD3 and Protein A Magnetic Bead ([U0007](#)), and immunoblotted with mouse purified polyclonal anti-PDZD3.

Specification

Product Description	This IP-WB antibody pair set comes with one antibody for immunoprecipitation and another to detect the precipitated protein in western blot.
Reactivity	Human
Quality Control Testing	Immunoprecipitation-Western Blot (IP-WB) Immunoprecipitation of PDZD3 transfected lysate using rabbit polyclonal anti-PDZD3 and Protein A Magnetic Bead (U0007), and immunoblotted with mouse purified polyclonal anti-PDZD3.
Supplied Product	Antibody pair set content: 1. Antibody pair for IP: rabbit polyclonal anti-PDZD3 (300 ul) 2. Antibody pair for WB: mouse purified polyclonal anti-PDZD3 (50 ug)
Storage Instruction	Store reagents of the antibody pair set at -20°C or lower. Please aliquot to avoid repeated freeze thaw cycle. Reagents should be returned to -20°C storage immediately after use.

Applications

- Immunoprecipitation-Western Blot

[Protocol Download](#)

Gene Info — PDZD3

Entrez GeneID [79849](#)**Gene Name** PDZD3**Gene Alias** FLJ22756, IKEPP, PDZK2**Gene Description** PDZ domain containing 3**Omim ID** [607146](#)**Gene Ontology** [Hyperlink](#)

Gene Summary Guanylyl cyclase C (GCC, or GUCY2C; MIM 601330) produces cGMP following the binding of either endogenous ligands or heat-stable enterotoxins secreted by E. coli and other enteric bacteria. Activation of GCC initiates a signaling cascade that leads to phosphorylation of the cystic fibrosis transmembrane conductance regulator (CFTR; MIM 602421), followed by a net efflux of ions and water into the intestinal lumen. IKEPP is a regulatory protein that associates with GCC and regulates the amount of cGMP produced following receptor stimulation (Scott et al., 2002 [PubMed 119 50846]).[supplied by OMIM]

Other Designations PDZ domain containing 2[intestinal and kidney enriched PDZ protein]natrium-phosphate cotransporter 1a C-terminal-associated protein 2