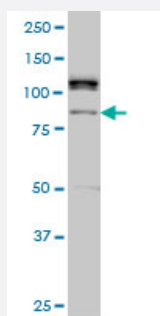


ALS2CR8 monoclonal antibody (M01), clone 2A3

Catalog # H00079800-M01

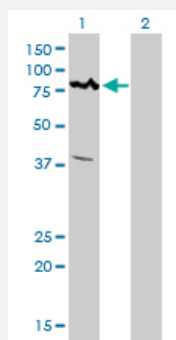
Size 100 ug

Applications



Western Blot (Cell lysate)

ALS2CR8 monoclonal antibody (M01), clone 2A3 Western Blot analysis of ALS2CR8 expression in HeLa S3 NE (Cat # L013V3).

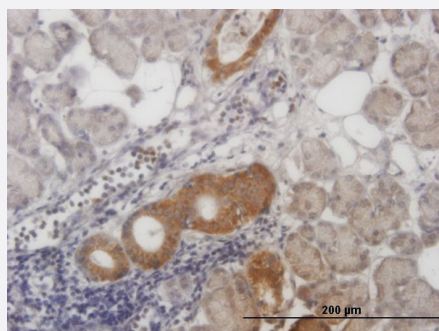


Western Blot (Transfected lysate)

Western Blot analysis of ALS2CR8 expression in transfected 293T cell line by ALS2CR8 monoclonal antibody (M01), clone 2A3.

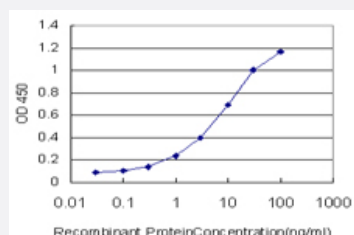
Lane 1: ALS2CR8 transfected lysate(79.8 KDa).

Lane 2: Non-transfected lysate.



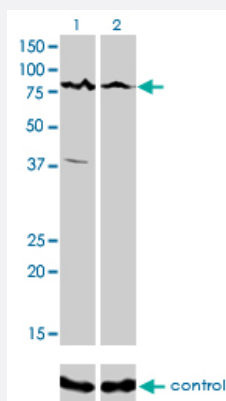
Immunohistochemistry (Formalin/PFA-fixed paraffin-embedded sections)

Immunoperoxidase of monoclonal antibody to ALS2CR8 on formalin-fixed paraffin-embedded human salivary gland. [antibody concentration 1 ug/ml]



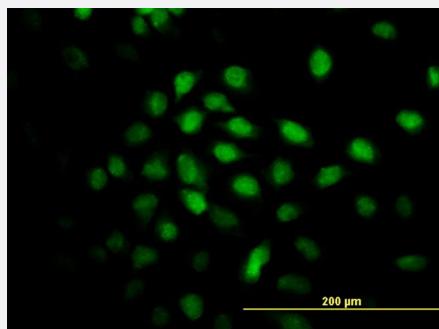
Sandwich ELISA (Recombinant protein)

Detection limit for recombinant GST tagged ALS2CR8 is approximately 0.3ng/ml as a capture antibody.



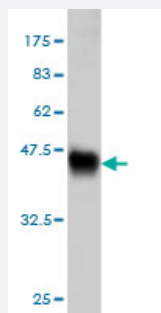
RNAi Knockdown (Antibody validated)

Western blot analysis of ALS2CR8 over-expressed 293 cell line, cotransfected with ALS2CR8 Validated Chimera RNAi (Cat # H00079800-R01V) (Lane 2) or non-transfected control (Lane 1). Blot probed with ALS2CR8 monoclonal antibody (M01), clone 2A3 (Cat # H00079800-M01). GAPDH (36.1 kDa) used as specificity and loading control.



Immunofluorescence

Immunofluorescence of monoclonal antibody to ALS2CR8 on HeLa cell. [antibody concentration 10 ug/ml]



Western Blot detection against Immunogen (36.52 KDa) .

Specification

Product Description	Mouse monoclonal antibody raised against a partial recombinant ALS2CR8.
Immunogen	ALS2CR8 (NP_079020, 621 a.a. ~ 718 a.a) partial recombinant protein with GST tag. MW of the GST tag alone is 26 KDa.
Sequence	CLTQNNSTASTMGNLPEPDQNLVAMDELVEVGDVEDTGNLEGTVHRILLGDVQTIPIQIIDNHSALIE ENPESTISVSQVKQEPKEPALSMEAKNCGL
Host	Mouse
Reactivity	Human
Interspecies Antigen Sequence	Mouse (71); Rat (79)

Isotype	IgG2a Kappa
Quality Control Testing	Antibody Reactive Against Recombinant Protein. Western Blot detection against Immunogen (36.52 KDa) .
Storage Buffer	In 1x PBS, pH 7.4
Storage Instruction	Store at -20°C or lower. Aliquot to avoid repeated freezing and thawing.

Applications

- Western Blot (Cell lysate)

ALS2CR8 monoclonal antibody (M01), clone 2A3 Western Blot analysis of ALS2CR8 expression in Hela S3 NE (Cat # L013V3).

[Protocol Download](#)

- Western Blot (Transfected lysate)

Western Blot analysis of ALS2CR8 expression in transfected 293T cell line by ALS2CR8 monoclonal antibody (M01), clone 2A3.

Lane 1: ALS2CR8 transfected lysate(79.8 KDa).
Lane 2: Non-transfected lysate.

[Protocol Download](#)

- Western Blot (Recombinant protein)

[Protocol Download](#)

- Immunohistochemistry (Formalin/PFA-fixed paraffin-embedded sections)

Immunoperoxidase of monoclonal antibody to ALS2CR8 on formalin-fixed paraffin-embedded human salivary gland. [antibody concentration 1 ug/ml]

[Protocol Download](#)

- Sandwich ELISA (Recombinant protein)

Detection limit for recombinant GST tagged ALS2CR8 is approximately 0.3ng/ml as a capture antibody.

[Protocol Download](#)

- ELISA

- RNAi Knockdown (Antibody validated)

Western blot analysis of ALS2CR8 over-expressed 293 cell line, cotransfected with ALS2CR8 Validated Chimera RNAi (Cat # H00079800-R01V) (Lane 2) or non-transfected control (Lane 1). Blot probed with ALS2CR8 monoclonal antibody (M01), clone 2A3 (Cat # H00079800-M01). GAPDH (36.1 kDa) used as specificity and loading control.

[Protocol Download](#)

- Immunofluorescence

Immunofluorescence of monoclonal antibody to ALS2CR8 on HeLa cell. [antibody concentration 10 ug/ml]

Gene Info — ALS2CR8

Entrez GeneID	79800
---------------	-----------------------

GeneBank Accession#	NM_024744
---------------------	---------------------------

Protein Accession#	NP_079020
--------------------	---------------------------

Gene Name	ALS2CR8
-----------	---------

Gene Alias	CARF, DKFZp667N246, FLJ12675, FLJ21579, NYD-SP24
------------	--

Gene Description	amyotrophic lateral sclerosis 2 (juvenile) chromosome region, candidate 8
------------------	---

Omim ID	607586
---------	------------------------

Gene Ontology	Hyperlink
---------------	---------------------------

Gene Summary	O
--------------	---

Other Designations	calcium-response factor
--------------------	-------------------------