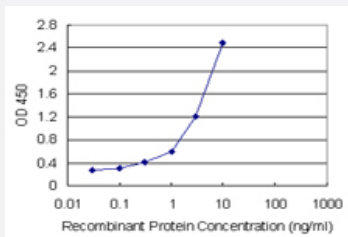


GSDMD (Human) Matched Antibody Pair

Catalog # H00079792-AP21 Size 1 Set

Applications



Sandwich ELISA detection sensitivity ranging from 0.1 ng/ml to 100 ng/ml.

Specification

Product Description	This antibody pair set comes with a matched antibody pair to detect and quantify the protein level of human GSDMD.
Reactivity	Human
Interspecies Antigen Sequence	Mouse (57); Rat (54)
Quality Control Testing	Standard curve using recombinant protein (H00079792-P01) as an analyte. Sandwich ELISA detection sensitivity ranging from 0.1 ng/ml to 100 ng/ml.
Supplied Product	Antibody pair set content: 1. Capture antibody: rabbit MaxPabR affinity purified polyclonal anti-GSDMD (100 ug) 2. Detection antibody: mouse purified polyclonal anti-GSDMD (20 ug) *Reagents are sufficient for at least 1-2 x 96 well plates using recommended protocols.
Storage Instruction	Store reagents of the antibody pair set at -20°C or lower. Please aliquot to avoid repeated freeze thaw cycle. Reagents should be returned to -20°C storage immediately after use.

Applications

- ELISA Pair (Recombinant protein)

[Protocol Download](#)

Gene Info — GSDMD

Entrez GeneID	79792
Gene Name	GSDMD
Gene Alias	DF5L, FKSG10, FLJ12150, GSDMDC1
Gene Description	gasdermin D
Gene Ontology	Hyperlink
Other Designations	1810036L03Rik gasdermin domain containing 1

Publication Reference

- [Microparticulate Caspase-1 Regulates Gasdermin-D and Pulmonary Vascular Endothelial Cell Injury.](#)

Mitra S, Exline M, Habyarimana F, Gavrilin M, Baker P, Masters SL, Wewers MD, Sarkar A.

American Journal of Respiratory Cell and Molecular Biology 2018 Jan; [Epub].