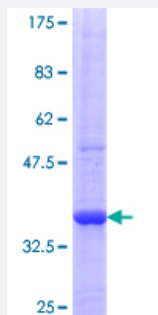


FBXO31 (Human) Recombinant Protein (Q01)

Catalog # H00079791-Q01

Size 25 ug, 10 ug

Applications



Specification

Product Description	Human FBXO31 partial ORF (NP_079011.3, 269 a.a. - 367 a.a.) recombinant protein with GST-tag at N-terminal.
Sequence	GQQQPFVLPVGVSSRNEDYPRTCRMCFYGTGLIAGHGFTSPERTPGVFILFDEDRFGFVWLELKS FSLYSRVQATFRNADAPSPQAFDEMLKNIQSLTS
Host	Wheat Germ (in vitro)
Theoretical MW (kDa)	36.63
Interspecies Antigen Sequence	Mouse (85); Rat (84)
Preparation Method	in vitro wheat germ expression system
Purification	Glutathione Sepharose 4 Fast Flow
Quality Control Testing	12.5% SDS-PAGE Stained with Coomassie Blue.
Storage Buffer	50 mM Tris-HCl, 10 mM reduced Glutathione, pH=8.0 in the elution buffer.
Storage Instruction	Store at -80°C. Aliquot to avoid repeated freezing and thawing.
Note	Best use within three months from the date of receipt of this protein.

Applications

- Enzyme-linked Immunoabsorbent Assay
- Western Blot (Recombinant protein)
- Antibody Production
- Protein Array

Gene Info — FBXO31

Entrez GeneID	79791
GeneBank Accession#	NM_024735
Protein Accession#	NP_079011.3
Gene Name	FBXO31
Gene Alias	DKFZp434B027, DKFZp434J1815, FBX14, FBXO14, FLJ22477, Fbx31, MGC15419, MGC9527, pp2386
Gene Description	F-box protein 31
Omim ID	609102
Gene Ontology	Hyperlink
Gene Summary	Members of the F-box protein family, such as FBXO31, are characterized by an approximately 40 -amino acid F-box motif. SCF complexes, formed by SKP1 (MIM 601434), cullin (see CUL1; MIM 603134), and F-box proteins, act as protein-ubiquitin ligases. F-box proteins interact with SKP1 through the F box, and they interact with ubiquitination targets through other protein interaction domains (Jin et al., 2004 [PubMed 15520277]).[supplied by OMIM]
Other Designations	F-box only protein 31 SCF ubiquitin ligase specificity factor putative breast cancer tumor-suppressor