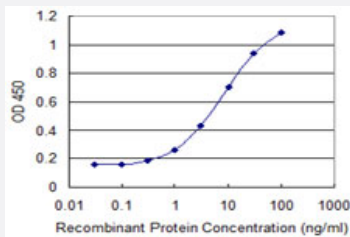


FBXO31 monoclonal antibody (M01), clone 1C5

Catalog # H00079791-M01

Size 100 ug

Applications



Sandwich ELISA (Recombinant protein)

Detection limit for recombinant GST tagged FBXO31 is 0.1 ng/ml as a capture antibody.

Specification

Product Description	Mouse monoclonal antibody raised against a partial recombinant FBXO31.
Immunogen	FBXO31 (NP_079011.3, 269 a.a. ~ 367 a.a) partial recombinant protein with GST tag. MW of the GST tag alone is 26 KDa.
Sequence	GQQQPFVLPVGVSSRNEDYPRTCRMCFYGTGLIAGHGFTSPERTPGVFILFDEDRFGFVWLELKS FSLYSRVQATFRNADAPSPQAFDEMLKNIQSLTS
Host	Mouse
Reactivity	Human
Interspecies Antigen Sequence	Mouse (85); Rat (84)
Isotype	IgG1 Kappa
Quality Control Testing	Antibody Reactive Against Recombinant Protein.
Storage Buffer	In 1x PBS, pH 7.4
Storage Instruction	Store at -20°C or lower. Aliquot to avoid repeated freezing and thawing.

Applications

- Sandwich ELISA (Recombinant protein)

Detection limit for recombinant GST tagged FBXO31 is 0.1 ng/ml as a capture antibody.

[Protocol Download](#)

- ELISA

Gene Info — FBXO31

Entrez GeneID	79791
GeneBank Accession#	NM_024735
Protein Accession#	NP_079011.3
Gene Name	FBXO31
Gene Alias	DKFZp434B027, DKFZp434J1815, FBX14, FBXO14, FLJ22477, Fbx31, MGC15419, MGC9527, pp2386
Gene Description	F-box protein 31
Omim ID	609102
Gene Ontology	Hyperlink
Gene Summary	Members of the F-box protein family, such as FBXO31, are characterized by an approximately 40 -amino acid F-box motif. SCF complexes, formed by SKP1 (MIM 601434), cullin (see CUL1; MIM 603134), and F-box proteins, act as protein-ubiquitin ligases. F-box proteins interact with SKP1 through the F box, and they interact with ubiquitination targets through other protein interaction domains (Jin et al., 2004 [PubMed 15520277]).[supplied by OMIM]
Other Designations	F-box only protein 31 SCF ubiquitin ligase specificity factor putative breast cancer tumor-suppressor