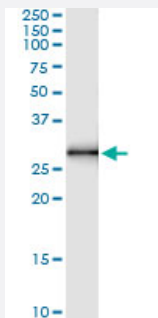


LIN28 (Human) IP-WB Antibody Pair

Catalog # H00079727-PW1

Size 1 Set

Applications



Immunoprecipitation of LIN28 transfected lysate using rabbit polyclonal anti-LIN28 and Protein A Magnetic Bead ([U0007](#)), and immunoblotted with mouse purified polyclonal anti-LIN28.

Specification

Product Description	This IP-WB antibody pair set comes with one antibody for immunoprecipitation and another to detect the precipitated protein in western blot.
Reactivity	Human
Interspecies Antigen Sequence	Mouse (96); Rat (98)
Quality Control Testing	Immunoprecipitation-Western Blot (IP-WB) Immunoprecipitation of LIN28 transfected lysate using rabbit polyclonal anti-LIN28 and Protein A Magnetic Bead (U0007), and immunoblotted with mouse purified polyclonal anti-LIN28.
Supplied Product	Antibody pair set content: 1. Antibody pair for IP: rabbit polyclonal anti-LIN28 (300 ul) 2. Antibody pair for WB: mouse purified polyclonal anti-LIN28 (50 ug)
Storage Instruction	Store reagents of the antibody pair set at -20°C or lower. Please aliquot to avoid repeated freeze thaw cycle. Reagents should be returned to -20°C storage immediately after use.

Applications

- Immunoprecipitation-Western Blot

[Protocol Download](#)

Gene Info — LIN28

Entrez GeneID	79727
Gene Name	LIN28
Gene Alias	CSDD1, FLJ12457, LIN-28, LIN28A, ZCCHC1
Gene Description	lin-28 homolog (C. elegans)
Omim ID	611043
Gene Ontology	Hyperlink
Gene Summary	CCHC domain containing 1
Other Designations	OTTHUMP00000003663 RNA-binding protein LIN-28 lin-28 homolog zinc finger, CCHC domain c ontaining 1