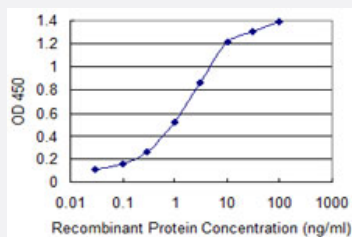


TBL1XR1 monoclonal antibody (M02), clone 4E2

Catalog # H00079718-M02

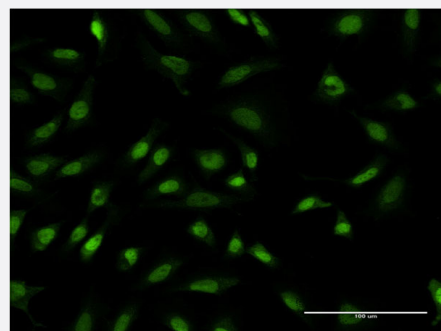
Size 100 ug

Applications



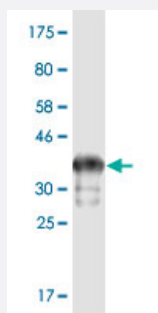
Sandwich ELISA (Recombinant protein)

Detection limit for recombinant GST tagged TBL1XR1 is 0.03 ng/ml as a capture antibody.



Immunofluorescence

Immunofluorescence of monoclonal antibody to TBL1XR1 on HeLa cell .
[antibody concentration 10 ug/ml]



Western Blot detection against Immunogen (36.52 KDa) .

Specification

Product Description

Mouse monoclonal antibody raised against a partial recombinant TBL1XR1.

Immunogen	TBL1XR1 (NP_071347, 81 a.a. ~ 178 a.a) partial recombinant protein with GST tag. MW of the GST tag alone is 26 KDa.
Sequence	LSLIDAVMPDVVQTRQQAYRDKLAQQQAAAAAAAAAAAAASQQGSAKNGENTANGEENGAHTIANN HTDMMEVDGDVEIPPNAKVVLRGHESEVFICAWN
Host	Mouse
Reactivity	Human
Interspecies Antigen Sequence	Mouse (31); Rat (31)
Isotype	IgG1 Kappa
Quality Control Testing	Antibody Reactive Against Recombinant Protein. Western Blot detection against Immunogen (36.52 KDa) .
Storage Buffer	In 1x PBS, pH 7.4
Storage Instruction	Store at -20°C or lower. Aliquot to avoid repeated freezing and thawing.

Applications

- Western Blot (Recombinant protein)

[Protocol Download](#)

- Sandwich ELISA (Recombinant protein)

Detection limit for recombinant GST tagged TBL1XR1 is 0.03 ng/ml as a capture antibody.

[Protocol Download](#)

- ELISA

- Immunofluorescence

Immunofluorescence of monoclonal antibody to TBL1XR1 on HeLa cell . [antibody concentration 10 ug/ml]

Gene Info — TBL1XR1

Entrez GeneID [79718](#)

GeneBank Accession# [NM_024665](#)

Protein Accession#	NP_071347
Gene Name	TBL1XR1
Gene Alias	C21, DC42, FLJ12894, IRA1, TBLR1
Gene Description	transducin (beta)-like 1 X-linked receptor 1
Gene Ontology	Hyperlink
Gene Summary	<p>The protein encoded by this gene has sequence similarity with members of the WD40 repeat-containing protein family. The WD40 group is a large family of proteins, which appear to have a regulatory function. It is believed that the WD40 repeats mediate protein-protein interactions and members of the family are involved in signal transduction, RNA processing, gene regulation, vesicular trafficking, cytoskeletal assembly and may play a role in the control of cytotypic differentiation. [provided by RefSeq]</p>
Other Designations	TBL1-related protein 1 nuclear receptor co-repressor/HDAC3 complex subunit

Pathway

- [Wnt signaling pathway](#)

Disease

- [Tobacco Use Disorder](#)