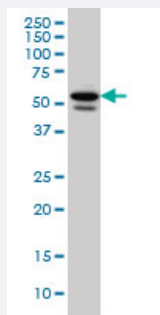


TBL1XR1 monoclonal antibody (M01), clone 3G7

Catalog # H00079718-M01

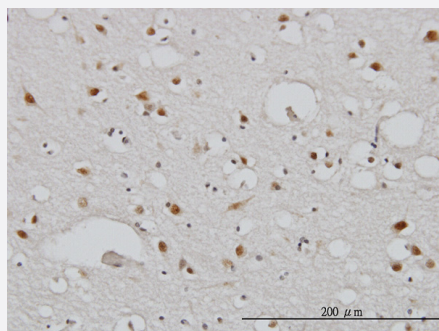
Size 50 ug

Applications



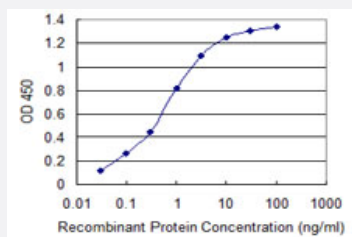
Western Blot (Cell lysate)

TBL1XR1 monoclonal antibody (M01), clone 3G7 Western Blot analysis of TBL1XR1 expression in HeLa (Cat # L013V1).



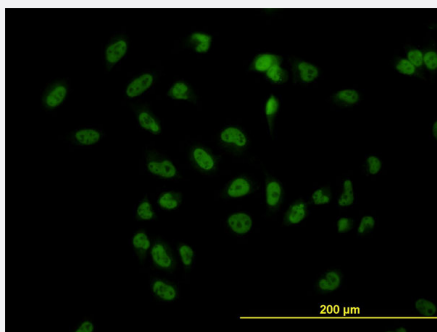
Immunohistochemistry (Formalin/PFA-fixed paraffin-embedded sections)

Immunoperoxidase of monoclonal antibody to TBL1XR1 on formalin-fixed paraffin-embedded human cerebral cortex. [antibody concentration 3 ug/ml]



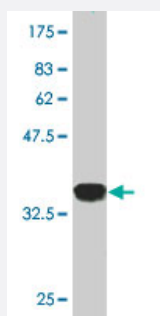
Sandwich ELISA (Recombinant protein)

Detection limit for recombinant GST tagged TBL1XR1 is 0.03 ng/ml as a capture antibody.



Immunofluorescence

Immunofluorescence of monoclonal antibody to TBL1XR1 on HeLa cell.
[antibody concentration 10 ug/ml]



Western Blot detection against Immunogen (36.52 KDa) .

Specification

Product Description	Mouse monoclonal antibody raised against a partial recombinant TBL1XR1.
Immunogen	TBL1XR1 (NP_071347, 81 a.a. ~ 178 a.a) partial recombinant protein with GST tag. MW of the GST tag alone is 26 KDa.
Sequence	LSLIDAVMPDVVQTRQQAYRDKLAQQQAAAAAAAAAAAAASQQGSAKNGENTANGEENGAHTIANN HTDMMEVDGDVEIPPNKAVVLRGHESEVFICAWN
Host	Mouse
Reactivity	Human
Interspecies Antigen Sequence	Mouse (31); Rat (31)
Isotype	IgG1 Kappa
Quality Control Testing	Antibody Reactive Against Recombinant Protein. Western Blot detection against Immunogen (36.52 KDa) .
Storage Buffer	In 1x PBS, pH 7.4
Storage Instruction	Store at -20°C or lower. Aliquot to avoid repeated freezing and thawing.

Applications

- Western Blot (Cell lysate)

TBL1XR1 monoclonal antibody (M01), clone 3G7 Western Blot analysis of TBL1XR1 expression in HeLa (Cat # L013V1).

[Protocol Download](#)

- Western Blot (Recombinant protein)

[Protocol Download](#)

- Immunohistochemistry (Formalin/PFA-fixed paraffin-embedded sections)

Immunoperoxidase of monoclonal antibody to TBL1XR1 on formalin-fixed paraffin-embedded human cerebral cortex. [antibody concentration 3 ug/ml]

[Protocol Download](#)

- Sandwich ELISA (Recombinant protein)

Detection limit for recombinant GST tagged TBL1XR1 is 0.03 ng/ml as a capture antibody.

[Protocol Download](#)

- ELISA

- Immunofluorescence

Immunofluorescence of monoclonal antibody to TBL1XR1 on HeLa cell. [antibody concentration 10 ug/ml]

Gene Info — TBL1XR1

Entrez GeneID [79718](#)

GeneBank Accession# [NM_024665](#)

Protein Accession# [NP_071347](#)

Gene Name TBL1XR1

Gene Alias C21, DC42, FLJ12894, IRA1, TBLR1

Gene Description transducin (beta)-like 1 X-linked receptor 1

Gene Ontology [Hyperlink](#)

Gene Summary

The protein encoded by this gene has sequence similarity with members of the WD40 repeat-containing protein family. The WD40 group is a large family of proteins, which appear to have a regulatory function. It is believed that the WD40 repeats mediate protein-protein interactions and members of the family are involved in signal transduction, RNA processing, gene regulation, vesicular trafficking, cytoskeletal assembly and may play a role in the control of cytotypic differentiation. [provided by RefSeq]

Other Designations

TBL1-related protein 1|nuclear receptor co-repressor/HDAC3 complex subunit

Publication Reference

- [TBL1XR1 Mutations Drive Extranodal Lymphoma by Inducing a Pro-tumorigenic Memory Fate.](#)

Leandro Venturutti, Matt Teater, Andrew Zhai, Amy Chadburn, Leena Babiker, Daleum Kim, Wendy Béguelin, Tak C Lee, Youngjun Kim, Christopher R Chin, William T Yewdell, Brian Raught, Jude M Phillip, Yanwen Jiang, Louis M Staudt, Michael R Green, Jayanta Chaudhuri, Olivier Elemento, Pedro Farinha, Andrew P Weng, Michael D Nissen, Christian Steidl, Ryan D Morin, David W Scott, Gilbert G Privé, Ari M Melnick.

Cell 2020 Jul; 182(2):297.

Application: WB-Ce, Mouse, Mouse germinal center B cells

- [The repressing function of the oncoprotein BCL-3 requires CtBP while its polyubiquitination and degradation involve the E3 ligase TBLR1.](#)

Keutgens A, Shostak K, Close P, Zhang X, Hennuy B, Aussems M, Chapelle JP, Viatour P, Gothot A, Fillet M, Chariot A.

Molecular and Cellular Biology 2010 Aug; 30(16):4006.

Application: IP, WB-Tr, Human, Crude cell extracts, HEK 293 cells

Pathway

- [Wnt signaling pathway](#)

Disease

- [Tobacco Use Disorder](#)