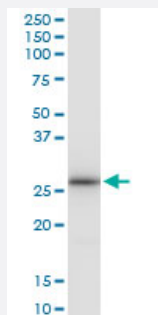


# LRRK1 (Human) IP-WB Antibody Pair

Catalog # H00079705-PW2

Size 1 Set

## Applications



Immunoprecipitation of LRRK1 transfected lysate using rabbit polyclonal anti-LRRK1 and Protein A Magnetic Bead ([U0007](#)), and immunoblotted with mouse purified polyclonal anti-LRRK1.

## Specification

<b>Product Description</b>	This IP-WB antibody pair set comes with one antibody for immunoprecipitation and another to detect the precipitated protein in western blot.
<b>Reactivity</b>	Human
<b>Interspecies Antigen Sequence</b>	Mouse (74); Rat (76)
<b>Quality Control Testing</b>	Immunoprecipitation-Western Blot (IP-WB) Immunoprecipitation of LRRK1 transfected lysate using rabbit polyclonal anti-LRRK1 and Protein A Magnetic Bead ( <a href="#">U0007</a> ), and immunoblotted with mouse purified polyclonal anti-LRRK1.
<b>Supplied Product</b>	Antibody pair set content: 1. Antibody pair for IP: rabbit polyclonal anti-LRRK1 (300 ul) 2. Antibody pair for WB: mouse purified polyclonal anti-LRRK1 (50 ug)
<b>Storage Instruction</b>	Store reagents of the antibody pair set at -20°C or lower. Please aliquot to avoid repeated freeze thaw cycle. Reagents should be returned to -20°C storage immediately after use.

## Applications

- Immunoprecipitation-Western Blot

[Protocol Download](#)

## Gene Info — LRRK1

Entrez GeneID	<a href="#">79705</a>
Gene Name	LRRK1
Gene Alias	FLJ23119, FLJ27465, KIAA1790, RIPK6, Roco1
Gene Description	leucine-rich repeat kinase 1
Omim ID	<a href="#">610986</a>
Gene Ontology	<a href="#">Hyperlink</a>
Other Designations	-

## Disease

- [Genetic Predisposition to Disease](#)
- [Parkinson disease](#)