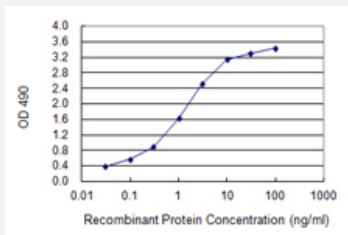


# ZMAT4 (Human) Matched Antibody Pair

Catalog # H00079698-AP22      Size 1 Set

## Applications



Sandwich ELISA detection sensitivity ranging from 0.03 ng/ml to 100 ng/ml.

## Specification

|                                      |  |
|--------------------------------------|--|
| <b>Product Description</b>           | This antibody pair set comes with a matched antibody pair to detect and quantify the protein level of human ZMAT4.   |
| <b>Reactivity</b>                    | Human  |
| <b>Interspecies Antigen Sequence</b> | Mouse (72); Rat (72)   |
| <b>Quality Control Testing</b>       | Standard curve using recombinant protein ( H00079698-P01 ) as an analyte.<br>Sandwich ELISA detection sensitivity ranging from 0.03 ng/ml to 100 ng/ml.  |
| <b>Supplied Product</b>              | Antibody pair set content:<br>1. Capture antibody: rabbit MaxPab® affinity purified polyclonal anti-ZMAT4 (100 ug)<br>2. Detection antibody: mouse purified polyclonal anti-ZMAT4 (20 ug)<br>*Reagents are sufficient for at least 1-2 x 96 well plates using recommended protocols. |
| <b>Storage Instruction</b>           | Store reagents of the antibody pair set at -20°C or lower. Please aliquot to avoid repeated freeze thaw cycle. Reagents should be returned to -20°C storage immediately after use.   |

## Applications

- ELISA Pair (Recombinant protein)

[Protocol Download](#)

## Gene Info — ZMAT4

|                    |                            |
|--------------------|----------------------------|
| Entrez GeneID      | <a href="#">79698</a>      |
| Gene Name          | ZMAT4                      |
| Gene Alias         | FLJ13842                   |
| Gene Description   | zinc finger, matrin type 4 |
| Gene Ontology      | <a href="#">Hyperlink</a>  |
| Gene Summary       | O                          |
| Other Designations | -                          |