

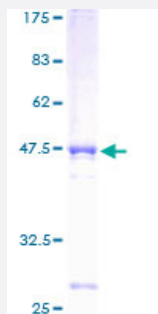
Full-Length

MLF1IP (Human) Recombinant Protein (P01)

Catalog # H00079682-P01

Size 25 ug, 10 ug

Applications



Specification

Product Description	Human MLF1IP full-length ORF (AAH31520, 1 a.a. - 176 a.a.) recombinant protein with GST-tag at N-terminal.
Sequence	MKTSDIKELNIVLPEFEKTHLEHQQRIESKVCKAAIATFYVNVKEQFIKMLKESQMLTNLKRKNAKMI SDIEKKRQRMIEVQDELLRLEPQLKQLQTKYDELKERKSSLRNAAYFLSNLKQLYQDYSDVQAQE PNVKETYDSSSLPALLFKARTLLGAESHLRNINHQLEKLLDQG
Host	Wheat Germ (in vitro)
Theoretical MW (kDa)	45.1
Interspecies Antigen Sequence	Mouse (56); Rat (57)
Preparation Method	in vitro wheat germ expression system
Purification	Glutathione Sepharose 4 Fast Flow
Quality Control Testing	12.5% SDS-PAGE Stained with Coomassie Blue.
Storage Buffer	50 mM Tris-HCl, 10 mM reduced Glutathione, pH=8.0 in the elution buffer.
Storage Instruction	Store at -80°C. Aliquot to avoid repeated freezing and thawing.

Note

Best use within three months from the date of receipt of this protein.

Applications

- Enzyme-linked Immunoabsorbent Assay
- Western Blot (Recombinant protein)
- Antibody Production
- Protein Array

Gene Info — MLF1IP

Entrez GeneID [79682](#)

GeneBank Accession# [BC031520](#)

Protein Accession# [AAH31520](#)

Gene Name MLF1IP

Gene Alias CENP-50, CENP-U, CENP-U(50), CENP50, CENPU, FLJ23468, KLIP1, PBIP1

Gene Description MLF1 interacting protein

Omim ID [611511](#)

Gene Ontology [Hyperlink](#)

Gene Summary The centromere is a specialized chromatin domain, present throughout the cell cycle, that acts as a platform on which the transient assembly of the kinetochore occurs during mitosis. All active centromeres are characterized by the presence of long arrays of nucleosomes in which CENPA (MIM 117139) replaces histone H3 (see MIM 601128). MLF1IP, or CENPU, is an additional factor required for centromere assembly (Foltz et al., 2006 [PubMed 16622419]).[supplied by OMIM]

Other Designations KSHV latent nuclear antigen interacting protein 1|centromere protein U|polo-box-interacting protein 1