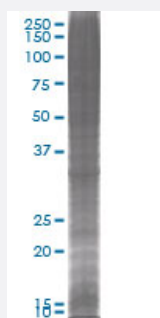


PPP1R3B 293T Cell Transient Overexpression Lysate(Denatured)

Catalog # H00079660-T01

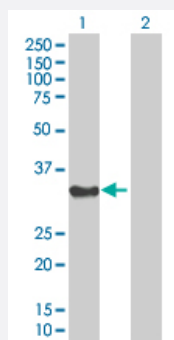
Size 100 uL

Applications



SDS-PAGE Gel

PPP1R3B transfected lysate



Western Blot

Lane 1: PPP1R3B transfected lysate (31.46 KDa).

Lane 2: Non-transfected lysate.

Specification

Transfected Cell Line	293T
Plasmid	pCMV-PPP1R3B full-length
Host	Human
Theoretical MW (kDa)	31.46
Interspecies Antigen Sequence	Mouse (89); Rat (89)

Quality Control Testing

Transient overexpression cell lysate was tested with Anti-PPP1R3B antibody ([H00079660-B01](#)) by Western Blots.
SDS-PAGE Gel
PPP1R3B transfected lysate
Western Blot
Lane 1: PPP1R3B transfected lysate (31.46 KDa).
Lane 2: Non-transfected lysate.

Storage Buffer

1X Sample Buffer (50 mM Tris-HCl, 2% SDS, 10% glycerol, 300 mM 2-mercaptoethanol, 0.01% Bromophenol blue)

Storage Instruction

Store at -80°C. Aliquot to avoid repeated freezing and thawing.

Applications

- Western Blot

Gene Info — PPP1R3B

Entrez GeneID

[79660](#)

GeneBank Accession#

[BC043388](#)

Protein Accession#

[AAH43388](#)

Gene Name

PPP1R3B

Gene Alias

FLJ14005, FLJ34675, GL, PPP1R4

Gene Description

protein phosphatase 1, regulatory (inhibitor) subunit 3B

Omim ID

[610541](#)

Gene Ontology

[Hyperlink](#)

Gene Summary

The protein phosphatase-1 (PP1) catalytic subunit (PPP1CA; MIM 176875) is regulated by targeting subunits, such as PP1R3B. PP1R3B suppresses the rate at which PP1 dephosphorylates (i.e., inactivates) glycogen phosphorylase (see PYGL; MIM 232700) and enhances the rate at which it activates glycogen synthase (see GYS2; MIM 138571) (Doherty et al., 1995 [PubMed 7498521]). [supplied by OMIM]

Other Designations

-

Pathway

- [Insulin signaling pathway](#)

Disease

- [Coronary Artery Disease](#)