

DNAxPAb

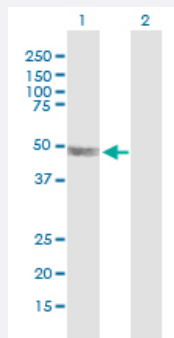
Hard-to-Find
Antibody

CHMP6 DNAxPab

Catalog # H00079643-W01P

Size 100 ug

Applications



Western Blot (Transfected lysate)

Western Blot analysis of CHMP6 expression in transfected 293T cell line by CHMP6 DNAxPab polyclonal antibody.

Lane 1: CHMP6 transfected lysate(44.62 KDa).

Lane 2: Non-transfected lysate.

Specification

Product Description	Rabbit polyclonal antibody raised against a full-length human CHMP6 DNA using DNAx™ Immune technology.
Technology	DNAx™ Immune
Immunogen	CHMP6 (NP_078867.2, 1 a.a. ~ 201 a.a) full-length human DNA
Sequence	MGNLFGRKKQSRVTEQDKAILQLKQQRDKLRQYQKRIAQQLERERALARQLLRDGRKERAKLLK KKRYQEQLLDRTENQISSLEAMVQSIEFTQIEMKVMGLQFGNECLNMHQVMSIEEVERILDETQ EAVEYQRQIDELLAGSFTQEDEDAILLELSAITQEQIELPEVPSEPLPEKIPENVPVKARPRQAEV AAS
Host	Rabbit
Reactivity	Human
Purification	Protein A
Quality Control Testing	Antibody reactive against mammalian transfected lysate.
Storage Buffer	In 1x PBS, pH 7.4

Storage Instruction

Store at -20°C or lower. Aliquot to avoid repeated freezing and thawing.

Applications

- Western Blot (Transfected lysate)

Western Blot analysis of CHMP6 expression in transfected 293T cell line by CHMP6 DNAXPab polyclonal antibody.

Lane 1: CHMP6 transfected lysate(44.62 KDa).

Lane 2: Non-transfected lysate.

[Protocol Download](#)

- Immunofluorescence (Transfected cell)

- Flow Cytometry (Transfected cell)

Gene Info — CHMP6

Entrez GeneID [79643](#)

GeneBank Accession# [NM_024591.3](#)

Protein Accession# [NP_078867.2](#)

Gene Name CHMP6

Gene Alias FLJ11749, VPS20

Gene Description chromatin modifying protein 6

Omim ID [610901](#)

Gene Ontology [Hyperlink](#)

Gene Summary CHMP6 belongs to the chromatin-modifying protein/charged multivesicular body protein (CHMP) family. These proteins are components of ESCRT-III (endosomal sorting complex required for transport III), a complex involved in degradation of surface receptor proteins and formation of endocytic multivesicular bodies (MVBs). Some CHMPs have both nuclear and cytoplasmic/vesicular distributions, and one such CHMP, CHMP1A (MIM 164010), is required for both MVB formation and regulation of cell cycle progression (Tsang et al., 2006 [PubMed 16730941]).[supplied by OMIM]

Other Designations charged multivesicular body protein 6

Pathway

- [Endocytosis](#)