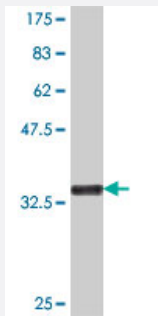


KREMEN2 polyclonal antibody (A01)

Catalog # H00079412-A01

Size 50 uL

Applications



Western Blot detection against Immunogen (37.11 KDa) .

Specification

Product Description	Mouse polyclonal antibody raised against a partial recombinant KREMEN2.
Immunogen	KREMEN2 (NP_078783, 121 a.a. ~ 220 a.a) partial recombinant protein with GST tag.
Sequence	MPGYLGCFVDSGAPPALSGPSGTSTKLTVQVCLRFRCRMKGYQLAGVEAGYACFCGSESDLARG RLAPATDCDQICFGHPGQLCGGDGRLGVYEVSVGSCQ
Host	Mouse
Reactivity	Human
Interspecies Antigen Sequence	Mouse (77); Rat (89)
Quality Control Testing	Antibody Reactive Against Recombinant Protein. Western Blot detection against Immunogen (37.11 KDa) .
Storage Buffer	50 % glycerol
Storage Instruction	Store at -20°C or lower. Aliquot to avoid repeated freezing and thawing.

Applications

- Western Blot (Recombinant protein)

[Protocol Download](#)

- ELISA

Gene Info — KREMEN2

Entrez GeneID [79412](#)

GeneBank Accession# [NM_024507](#)

Protein Accession# [NP_078783](#)

Gene Name KREMEN2

Gene Alias KRM2, MGC10791, MGC16709

Gene Description kringle containing transmembrane protein 2

Omim ID [609899](#)

Gene Ontology [Hyperlink](#)

Gene Summary This gene encodes a high-affinity dickkopf homolog 1 (DKK1) transmembrane receptor that functionally cooperates with DKK1 to block wingless (WNT)/beta-catenin signaling. The encoded protein forms a ternary membrane complex with DKK1 and the WNT receptor lipoprotein receptor-related protein 6 (LRP6), and induces rapid endocytosis and removal of LRP6 from the plasma membrane. It contains extracellular kringle, WSC, and CUB domains. Alternatively spliced transcript variants encoding distinct isoforms have been observed for this gene. [provided by RefSeq]

Other Designations kringle-containing transmembrane protein 2