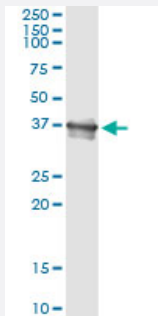


BCL2L14 (Human) IP-WB Antibody Pair

Catalog # H00079370-PW1

Size 1 Set

Applications



Immunoprecipitation of BCL2L14 transfected lysate using mouse monoclonal anti-BCL2L14 and Protein A Magnetic Bead ([U0007](#)), and immunoblotted with rabbit polyclonal anti-BCL2L14.

Specification

Product Description	This IP-WB antibody pair set comes with one antibody for immunoprecipitation and another to detect the precipitated protein in western blot.
Reactivity	Human
Interspecies Antigen Sequence	Mouse (67); Rat (68)
Quality Control Testing	Immunoprecipitation-Western Blot (IP-WB) Immunoprecipitation of BCL2L14 transfected lysate using mouse monoclonal anti-BCL2L14 and Protein A Magnetic Bead (U0007), and immunoblotted with rabbit polyclonal anti-BCL2L14.
Supplied Product	Antibody pair set content: 1. Antibody pair for IP: mouse monoclonal anti-BCL2L14 (300 ug) 2. Antibody pair for WB: rabbit polyclonal anti-BCL2L14 (50 ul)
Storage Instruction	Store reagents of the antibody pair set at -20°C or lower. Please aliquot to avoid repeated freeze thaw cycle. Reagents should be returned to -20°C storage immediately after use.

Applications

- Immunoprecipitation-Western Blot

[Protocol Download](#)

Gene Info — BCL2L14

Entrez GeneID [79370](#)

Gene Name BCL2L14

Gene Alias BCLG

Gene Description BCL2-like 14 (apoptosis facilitator)

Omim ID [606126](#)

Gene Ontology [Hyperlink](#)

Gene Summary The protein encoded by this gene belongs to the BCL2 protein family. BCL2 family members form hetero- or homodimers and act as anti- or pro-apoptotic regulators that are involved in a wide variety of cellular activities. Overexpression of this gene has been shown to induce apoptosis in cells. Three alternatively spliced transcript variants encoding two distinct isoforms have been reported for this gene. [provided by RefSeq]

Other Designations BCL2-like 14|apoptosis regulator BCL-G

Disease

- [Cardiovascular Diseases](#)
- [Diabetes Mellitus](#)
- [Edema](#)
- [Genetic Predisposition to Disease](#)
- [Narcolepsy](#)
- [Tobacco Use Disorder](#)