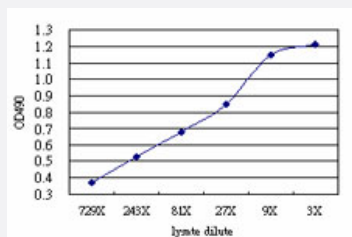


BCL2L14 (Human) Matched Antibody Pair

Catalog # H00079370-AP51

Size 1 Set

Applications



Sandwich ELISA detection sensitivity ranging from approximately 729x to 3x dilution of the BCL2L14 293T overexpression lysate (non-denatured).

Specification

Product Description	This antibody pair set comes with a matched antibody pair to detect and quantify the protein level of human BCL2L14.
Reactivity	Human
Interspecies Antigen Sequence	Mouse (67); Rat (68)
Quality Control Testing	Standard curve using BCL2L14 293T overexpression lysate (non-denatured) as an analyte. Sandwich ELISA detection sensitivity ranging from approximately 729x to 3x dilution of the BCL2L14 293T overexpression lysate (non-denatured).
Supplied Product	Antibody pair set content: 1. Capture antibody: mouse monoclonal anti-BCL2L14 (100 ug) 2. Detection antibody: rabbit purified polyclonal anti-BCL2L14 (50 ug) *Reagents are sufficient for at least 3-5 x 96 well plates using recommended protocols.
Storage Instruction	Store reagents of the antibody pair set at -20°C or lower. Please aliquot to avoid repeated freeze thaw cycle. Reagents should be returned to -20°C storage immediately after use.

Applications

- ELISA Pair (Transfected lysate)

[Protocol Download](#)

Gene Info — BCL2L14

Entrez GeneID [79370](#)

Gene Name BCL2L14

Gene Alias BCLG

Gene Description BCL2-like 14 (apoptosis facilitator)

Omim ID [606126](#)

Gene Ontology [Hyperlink](#)

Gene Summary The protein encoded by this gene belongs to the BCL2 protein family. BCL2 family members form hetero- or homodimers and act as anti- or pro-apoptotic regulators that are involved in a wide variety of cellular activities. Overexpression of this gene has been shown to induce apoptosis in cells. Three alternatively spliced transcript variants encoding two distinct isoforms have been reported for this gene. [provided by RefSeq]

Other Designations BCL2-like 14|apoptosis regulator BCL-G

Disease

- [Cardiovascular Diseases](#)
- [Diabetes Mellitus](#)
- [Edema](#)
- [Genetic Predisposition to Disease](#)
- [Narcolepsy](#)
- [Tobacco Use Disorder](#)