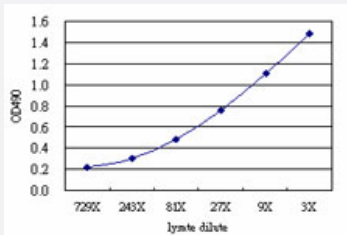


# IRX6 (Human) Matched Antibody Pair

Catalog # H00079190-AP51

Size 1 Set

## Applications



Sandwich ELISA detection sensitivity ranging from approximately 729x to 3x dilution of the IRX6 293T overexpression lysate (non-denatured).

## Specification

<b>Product Description</b>	This antibody pair set comes with a matched antibody pair to detect and quantify the protein level of human IRX6.
<b>Reactivity</b>	Human
<b>Interspecies Antigen Sequence</b>	Mouse (75); Rat (76)
<b>Quality Control Testing</b>	Standard curve using IRX6 293T overexpression lysate (non-denatured) as an analyte. Sandwich ELISA detection sensitivity ranging from approximately 729x to 3x dilution of the IRX6 293 T overexpression lysate (non-denatured).
<b>Supplied Product</b>	Antibody pair set content: 1. Capture antibody: mouse monoclonal anti-IRX6 (100 ug) 2. Detection antibody: rabbit purified polyclonal anti-IRX6 (50 ug) *Reagents are sufficient for at least 3-5 x 96 well plates using recommended protocols.
<b>Storage Instruction</b>	Store reagents of the antibody pair set at -20°C or lower. Please aliquot to avoid repeated freeze thaw cycle. Reagents should be returned to -20°C storage immediately after use.

## Applications

- ELISA Pair (Transfected lysate)

[Protocol Download](#)

## Gene Info — IRX6

Entrez GeneID	<a href="#">79190</a>
Gene Name	IRX6
Gene Alias	IRX-3, IRX7, IRXB3
Gene Description	iroquois homeobox 6
Omim ID	<a href="#">606196</a>
Gene Ontology	<a href="#">Hyperlink</a>
Other Designations	iroquois homeobox protein 1-like iroquois homeobox protein 6 iroquois homeobox protein 7